

**Minutes of  
Clay County Board of Supervisors  
Meeting Held on Monday, June 6, 2022 at 9:00 a.m.**

**BE IT REMEMBERED** a regular meeting of the Clay County Board of Supervisors was held at the Clay County Courthouse, West Point, Mississippi, on Monday, June 6, 2022.

PRESENT:

Lynn D. Horton, *Supervisor District 1, Presiding*  
Luke Lummus, *Supervisor District 2*  
R.B. Davis, *Supervisor District 3*  
Shelton Deanes, *Supervisor District 4*  
Joe Chandler, *Supervisor District 5*

Amy G. Berry, *Clay County Chancery Clerk*  
Angela Turner Ford, *Board Attorney*  
Eddie Scott, *Clay County Sheriff*

County Residents

The following proceedings were had:

CALL TO ORDER/INVOCATION

The meeting was called to order by Sheriff Eddie Scott. The welcome was given by Supervisor Horton with invocation given by Supervisor Davis.

ADOPTION OF AGENDA

Motion by Supervisor Deanes to adopt the agenda as prepared.

Seconded by Supervisor Davis.

(Exhibit "A")

AMENDMENT OF AGENDA

Motion by Supervisor Chandler to call for amendments to the agenda.

Seconded by Supervisor Lummus.

## AMENDMENTS TO THE AGENDA

The following items were added to the agenda for further discussion and consideration by the Board:

- Authorize and approve a Resolution For the Time Capsule

### AUTHORIZE AND APPROVE THE CLAIMS DOCKET FOR THE MONTH OF JUNE, 2022

Supervisor Deanes moved to authorize and approve the claims docket for the month of June, 2022.

The motion was seconded by Supervisor Davis.

(Exhibit "B")

### AUTHORIZE AND APPROVE PAYMENT TO RANDY JONES FOR SERVICES RENDERED IN THE AMOUNT OF \$1,984.23 AS THE FLOOD PLAIN COORDINATOR OF THE COUNTY

Supervisor Chandler moved to authorize and approve payment to Randy Jones for services rendered in the amount of \$1,984.23 as the Flood Plain Coordinator of Clay County.

The motion was seconded by Supervisor Davis.

(Exhibit "C")

### AUTHORIZE AND APPROVE TO SPREAD UPON THE MINUTES OF THE BOARD THE CERTIFICATION OF TRAINING FOR RANDY JONES AT THE ASSOCIATION OF FLOODPLAIN MANAGERS OF MISSISSIPPI ANNUAL CONFERENCE HELD IN BILOXI, MISSISSIPPI ON MAY 2-4, 2022

Supervisor Lummus moved to authorize and approve to spread upon the Minutes of the Board the Certification of Training of Randy Jones at the Association of Floodplain Managers of Mississippi Annual Conference held in Biloxi, Mississippi on May 2-4, 2022.

The motion was seconded by Supervisor Chandler.

(Exhibit "D")

AUTHORIZE AND APPROVE TRAVEL AND PAYMENT OF INVOICES FOR JUSTICE COURT JUDGE THOMAS HAMPTON TO ATTEND THE MISSISSIPPI JUSTICE COURT JUDGES ASSOCIATION SUMMER CONVENTION TO BE HELD IN BILOXI, MISSISSIPPI ON JULY 17-21, 2022

Supervisor Deanes moved to authorize and approve travel and payment of invoices for Justice Court Judge Thomas Hampton to attend the Mississippi Justice Court Judges Association Summer Convention to be held in Biloxi, Mississippi on July 17-21, 2022.

The motion was seconded by Supervisor Davis.

(Exhibit "E")

AT THIS TIME, THE BOARD PRESENTED TO THE WEST POINT CONSOLIDATED SCHOOL DISTRICT'S SUPT OF EDUCATION, BURNELL MCDONALD, A RESOLUTION, APPROVED AT A SUBSEQUENT MEETING, COMEMORATING HIS RETIREMENT AND SERVICE TO THE WEST POINT CLAY COUNTY SCHOOL DISTRICT

(Exhibit "F")

AUTHORIZE AND APPROVE TO SPREAD UPON THE MINUTES THE ORDER SIGNED BY CIRCUIT JUDGE LEE J. HOWARD SETTING COMPENSATION FOR CYNTHIA H. ZELINKA, COURT REPORTER FOR THE 16<sup>TH</sup> DISTRICT, CIRCUIT COURT

Supervisor Lummus moved to authorize and approve to spread upon the Minutes of the Board the Order signed by Circuit Judge Lee J. Howard setting compensation for Cynthia H. Zelinka, Court Reporter for the 16<sup>th</sup> District, Circuit Court.

The motion was seconded by Supervisor Deanes.

(Exhibit "G")

AUTHORIZE AND APPROVE THE PURCHASE OF EQUIPMENT OF SOLE SOURCE ITEM FROM STRYKER FOR THE AMBULANCE SERVICE WITH THE EMSOF GRANT FUNDS AS PART OF THE CONTRACT WITH THE NE MS AMBULANCE SERVICE

Supervisor Lummus moved to authorize and approve the purchase of equipment of sole source item from Stryker for the Ambulance Service with the EMSOF Grant Funds as part of the contract with the NE MS Ambulance Service.

The motion was seconded by Supervisor Davis.

(Exhibit "H")

AUTHORIZE AND APPROVE THE TIME CAPSULE RESOLUTION ON BEHALF OF THE BOARD OF SUPERVISORS FOR THE TIME CAPSULE CEREMONY

Supervisor Deanes moved to authorize and approve the Resolution for the Time Capsule dedication/ceremony for the City of West Point on behalf of the Board of Supervisors.

The motion was seconded by Supervisor Lummus.

(Exhibit "I")

#### AUTHORIZE AND APPROVE TO GO INTO CLOSED SESSION

Supervisor Deanes moved to authorize and approve to go into closed session.

The motion was seconded by Supervisor Lummus.

#### AUTHORIZE AND APPROVE TO GO FROM CLOSED SESSION TO EXECUTIVE SESSION AS ALLOWED UNDER SECTION 25-41-7 OF THE *MISSISSIPPI CODE OF 1972*, AS AMENDED AND ANNOTATED, TO DISCUSS POTENTIAL LITIGATION MATTER

Supervisor Deanes moved to authorize and approve to go from closed session to executive session as allowed under Section 25-41-7 of the *Mississippi Code of 1972*, as amended and annotated, to discuss potential litigation and a personnel matter.

The motion was seconded by Supervisor Lummus.

#### AUTHORIZE AND APPROVE TO COME OUT OF EXECUTIVE SESSION

Supervisor Deanes moved to authorize and approve to come out of executive session.

The motion was seconded by Supervisor Lummus.

#### AUTHORIZE AND APPROVE TO RENEW THE RESOLUTIONS AND PROCLAMATIONS OF EMERGENCY DECLARATIONS FOR CLAY COUNTY AS PRESENTED TO THE BOARD BY TORREY WILLIAMS, EMA AND E911 DIRECTOR

Supervisor Deanes moved to authorize and approve to renew the Resolutions and Proclamations of Emergency Declarations for Clay County as presented to the Board by Torrey Williams, EMA and E911 Director.

The motion was seconded by Supervisor Lummus.

(Exhibit "J")

#### AUTHORIZE AND APPROVE TRAVEL TO KANSAS CITY FOR THE SHERIFF AND ANY BOARD MEMBERS TO ATTEND THE NATIONAL SHERIFF'S CONFERENCE JUNE 22-30, 2022

Supervisor Deanes moved to authorize and approve travel to Kansas City for the Sheriff and any Board Members to attend the National Sheriff's Conference June 22-30, 2022.

The motion was seconded by Supervisor Davis.

(Exhibit "K")

AUTHORIZE AND APPROVE THE \$240,000.00 ESTIMATE AS PREPARED BY ROBERT L. CALVERT, COUNTY ENGINEER, FOR THE QUAIL RIDGE ROAD PROJECT

Supervisor Deanes moved to authorize and approve the \$240,000 estimate as prepared by Robert L. Calvert, County Engineer, for the Quail Ridge Road Project and further, to direct the Clerk to remit the said estimate to the Quail Ridge Homeowners.

The motion as seconded by Supervisor Lummus.

(Exhibit "L")

AUTHORIZE AND APPROVE FOR THE UNA/PALO ALTO TRUCK BE TEMPORARILY TRANSFERRED TO UNIT 700, THE SOUTH EAST VOLUNTEER FIRE UNIT, PENDING THE S E UNIT TRUCK IS REPAIRED AND PENDING TRAINING ON THE OPERATION OF THE TRUCK

Supervisor Deanes moved to authorize and approve for the UNA/PALO Alto Truck be temporarily transferred to Unit 700, the South East Volunteer Fire Unit, pending the SE Unit truck is repaired and pending training on the operation of the truck.

The motion was seconded by Supervisor Lummus.


RECESS

Supervisor Deanes moved to authorize and approve to recess until Thursday, June 9, 2022 at 9:00 a.m. at the Clay County Courthouse.

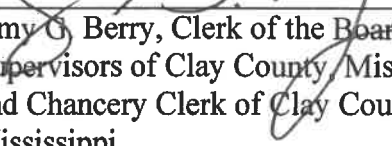
The motion was seconded by Supervisor Lummus.

\*\*\* All motions were carried unanimously unless otherwise indicated.

SO ORDERED, this the 6<sup>th</sup> day of June, 2022.

  
Lynn Horton, President of the Board of  
Supervisors of Clay County, Mississippi



  
\_\_\_\_\_  
Amy G. Berry, Clerk of the Board of  
Supervisors of Clay County, Mississippi  
and Chancery Clerk of Clay County,  
Mississippi

# EXHIBIT A



***Clay County Board of Supervisors  
Agenda for Regular Meeting  
Monday, June 6, 2022, at 9:00 a.m.***

- Call to Order
- Welcome & Prayer
- Adopt and Amend Agenda
- Authorize and approve the Claims Docket
- Authorize and approve payment to Randy Jones, Flood Plain Coordinator, in the amount of \$1,984.23 for services rendered for the month of May 2022
- Authorize and approve to spread on the minutes the Certificate of Training for Randy Jones, Flood Plain Coordinator
- Special Presentation
- Amy Berry – *Chancery Clerk*
  - Authorize and approve travel for Judge Hampton to attend the MS Justice Court Judges Association training July 17-21, 2022
  - Authorize and approve to spread on the minutes the Circuit Court Order received from Judge Howard regarding his Court Reporter Pay
  - Authorize and approve the EMSOF Grant expense for the ambulance service to purchase
- Other Business
- Request to go in to Executive Session as allowed under Section 25-41-7 of the *Mississippi of 1972*, to discuss a potential litigation matter
- Recess until *Thursday, June 9, 2022 at 9:00 a.m.* at the Clay County Courthouse

**Amendments:**

---

---

---

---



# EXHIBIT B

| CLAIM # | VENDOR NAME                   | AMOUNT  |
|---------|-------------------------------|---------|
| 5189    | AUTO-CHLOR SYSTEMS            | 216.95  |
| 5191    | FUELMAN-SHERIFF               | 2308.87 |
| 5192    | BROOKS-JEFFREY MARKETING INC. | 58.61   |
| 5193    | REDWOOD TOXICOLOGY LABORATORY | 219.92  |
| 5194    | FUELMAN-DC                    | 64.78   |
| 5195    | AIRGAS SOUTH                  | 244.14  |
| 5197    | KRISTEN WOOD WILLIAMS, PLLC   | 200.00  |
| 5199    | MELISSA GRIMES                | 210.60  |
| 5200    | MRH MEDICAL GROUP, WP         | 262.04  |
| 5201    | FUELMAN-SHERIFF               | 2509.44 |
| 5202    | CASH & CARRY CLEANERS         | 30.00   |
| 5206    | SECURITY SOLUTIONS, LLC       | 2650.00 |
| 5207    | QUILL CORPORATION             | 244.99  |
| 5208    | DRUG FREE WORKPLACES, INC     | 88.00   |
| 5209    | MCBRAYER QUICK LUBE           | 73.00   |
| 5210    | CASH & CARRY CLEANERS         | 20.00   |
| 5211    | CASH & CARRY CLEANERS         | 15.00   |
| 5212    | MCBRAYER QUICK LUBE           | 80.00   |
| 5213    | CASH & CARRY CLEANERS         | 30.00   |
| 5219    | QUILL CORPORATION             | 219.98  |
| 5220    | QUILL CORPORATION             | 520.79  |
| 5221    | QUILL CORPORATION             | 67.95   |
| 5222    | QUILL CORPORATION             | 133.60  |
| 5223    | QUILL CORPORATION             | 107.99  |
| 5224    | QUILL CORPORATION             | 86.97   |
| 5225    | QUILL CORPORATION             | 280.98  |
| 5226    | QUILL CORPORATION             | 13.79   |
| 5227    | CAPITAL ONE                   | 15.98   |
| 5228    | LOWE'S HOME CENTER, INC.      | 18.55-  |
| 5229    | LOWE'S HOME CENTER, INC.      | 151.46  |
| 5230    | LOWE'S HOME CENTER, INC.      | 132.11  |
| 5231    | ALMOND PRINTING               | 265.00  |
| 5232    | QUILL CORPORATION             | 41.76   |
| 5233    | REFRIGERATION SUPPLY COMPANY  | 830.28  |
| 5234    | REFRIGERATION SUPPLY COMPANY  | 17.50-  |
| 5236    | REFRIGERATION SUPPLY COMPANY  | 480.00  |
| 5237    | QUILL CORPORATION             | 19.99   |
| 5238    | QUILL CORPORATION             | 105.99  |
| 5239    | QUILL CORPORATION             | 12.58   |
| 5240    | DATA SYSTEMS MANAGEMENT, INC  | 2889.00 |
| 5241    | BEHAVIORAL MEDICINE           | 200.00  |
| 5245    | MCBRAYER QUICK LUBE           | 78.00   |
| 5246    | MCBRAYER QUICK LUBE           | 53.00   |
| 5247    | LANELL EARLY                  | 80.00   |
| 5248    | SOUTHERN TELECOMMUNICATIONS   | 591.10  |
| 5262    | QUILL CORPORATION             | 15.99   |
| 5263    | QUILL CORPORATION             | 27.99   |
| 5264    | QUILL CORPORATION             | 279.61  |
| 5265    | QUILL CORPORATION             | 798.40  |
| 5266    | QUILL CORPORATION             | 74.85   |

527

CLAY COUNTY  
CLAIMS SUMMARY FOR: 6/2022  
FOR THE PERIOD ENDED JUNE 06, 2022

| CLAIM # | VENDOR NAME                   | AMOUNT  |
|---------|-------------------------------|---------|
| 5267    | QUILL CORPORATION             | 124.75  |
| 5268    | QUILL CORPORATION             | 332.52  |
| 5269    | QUILL CORPORATION             | 645.48  |
| 5270    | QUILL CORPORATION             | 1658.00 |
| 5271    | QUILL CORPORATION             | 1658.00 |
| 5272    | QUILL CORPORATION             | 19.59   |
| 5273    | QUILL CORPORATION             | 330.95  |
| 5274    | QUILL CORPORATION             | 6.39    |
| 5275    | PITNEY BOWES GLOBAL FINANCIAL | 578.28  |
| 5276    | QUILL CORPORATION             | 10.58   |
| 5277    | QUILL CORPORATION             | 13.77   |
| 5278    | QUILL CORPORATION             | 231.96  |
| 5279    | CARRIE KIMBROUGH              | 19.89   |
| 5280    | JOSEPH HILLMAN, MD            | 200.00  |
| 5281    | AMY G. BERRY - FEES           | 156.00  |
| 5282    | CITY WATER & LIGHT DEPT.      | 218.94  |
| 5283    | CITY WATER & LIGHT DEPT.      | 116.26  |
| 5296    | QUILL CORPORATION             | 51.98   |
| 5300    | MAGNOLIA BOTTLED WATER CO.    | 27.00   |
| 5301    | DAILY TIMES LEADER            | 361.22  |
| 5302    | DAILY TIMES LEADER            | 121.06  |
| 5303    | MS STATE MEDICAL EXAMINER     | 1150.00 |
| 5304    | MS STATE MEDICAL EXAMINER     | 150.00  |
| 5305    | CASH & CARRY CLEANERS         | 15.00   |
| 5306    | CASH & CARRY CLEANERS         | 20.00   |
| 5308    | R J YOUNG COMPANY             | 130.16  |
| 5310    | SHRED MANAGERS                | 60.00   |
| 5312    | DELTA COMPUTER SYSTEMS, INC   | 85.00   |
| 5313    | DIXIE NET                     | 264.14  |
| 5314    | CLAY COUNTY CO-OP             | 85.00   |
| 5316    | ABSOLUTE PRINT SOLUTIONS      | 4025.74 |
| 5318    | REFRIGERATION SUPPLY COMPANY  | 54.00   |
| 5319    | WEST POINT SCHOOLS            | 58.57   |
| 5320    | CITY OF WEST POINT            | 21.30   |
| 5321    | STRICKLAND COMPANIES          | 54.92   |
| 5323    | DELTA COMPUTER SYSTEMS, INC   | 1225.00 |
| 5324    | GOLDEN TRIANGLE PL & DEV DIST | 228.00  |
| 5325    | ITC DELTACOM, INC             | 152.11  |
| 5326    | SUNFLOWER STORE               | 100.00  |
| 5327    | GUEST BODY SHOP, LLC          | 1108.82 |
| 5328    | JIM'S AUTO PARTS, WEST POINT  | 467.07  |
| 5329    | GEORGE'S TIRE SERVICE         | 80.00   |
| 5330    | GEORGE'S TIRE SERVICE         | 2422.00 |
| 5331    | ELMO'S MILITARY SURPLUS       | 129.00  |
| 5332    | LOWE'S HOME CENTER, INC.      | 393.50  |
| 5333    | CAPITAL ONE                   | 142.96  |
| 5335    | SOUTHERN TELECOMMUNICATIONS   | 42.76   |
| 5336    | CHEATHAM EYE CARE             | 61.64   |
| 5337    | MS STATE UNIV. EXTENSION SERV | 1405.58 |
| 5339    | NORTH MS MEDICAL CLINIC       | 170.00  |
| 5340    | FUELMAN-DC                    | 74.72   |
| 5343    | EXPRESS OIL CHANGE, LLC       | 406.13  |

| CLAIM # | VENDOR NAME                   | AMOUNT   |
|---------|-------------------------------|----------|
| 5344    | STRICKLAND COMPANIES          | 15.72    |
| 5345    | STRICKLAND COMPANIES          | 15.72    |
| 5346    | STRICKLAND COMPANIES          | 25.30    |
| 5347    | DELUXE BUSINESS CHECKS        | 132.43   |
| 5348    | GUARDIAN LOCK & KEY           | 632.35   |
| 5349    | A-1 APPLIANCE CENTER          | 101.95   |
| 5350    | A-1 APPLIANCE CENTER          | 48.00    |
| 5351    | A-1 APPLIANCE CENTER          | 33.90    |
| 5352    | A-1 APPLIANCE CENTER          | 179.90   |
| 5354    | FUELMAN-SHERIFF               | 2138.90  |
| 5357    | AMY G. BERRY - FEES           | 425.00   |
| 5358    | CASH & CARRY CLEANERS         | 20.00    |
| 5359    | CASH & CARRY CLEANERS         | 15.00    |
| 5360    | DAILY TIMES LEADER            | 7.20     |
| 5361    | CASH & CARRY CLEANERS         | 30.00    |
| 5362    | COMCAST CABLE                 | 166.91   |
| 5363    | MERCHANT CO.                  | 1472.25  |
| 5367    | NATIONAL ELEVATOR INSPECTION  | 198.00   |
| 5372    | LANN CHEMICAL                 | 95.68    |
| 5441    | TIM DOSS                      | 26.91    |
| 5442    | LANN CHEMICAL                 | 774.00   |
| 5443    | LANN CHEMICAL                 | 305.00   |
| 5444    | LANN CHEMICAL                 | 600.95   |
| 5445    | CANNON MOTORS OF WEST POINT   | 280.04   |
| 5446    | JIM'S AUTO PARTS, WEST POINT  | 524.79   |
| 5447    | GEORGE'S TIRE SERVICE         | 20.00    |
| 5448    | LANN CHEMICAL                 | 191.36   |
| 5449    | UNITED PRODUCE                | 345.00   |
| 5450    | GOLDEN TRIANGLE PL & DEV DIST | 11026.00 |
| 5452    | TOTAL LAWN CARE               | 135.00   |
| 5453    | TOTAL LAWN CARE               | 135.00   |
| 5454    | TOTAL LAWN CARE               | 90.00    |
| 5455    | TOTAL LAWN CARE               | 110.00   |
| 5456    | TOTAL LAWN CARE               | 395.00   |
| 5458    | S. E. CHICKASAW WATER ASSOC.  | 25.00    |
| 5459    | PTS SOLUTIONS, INC            | 6170.00  |
| 5460    | CITY OF WEST POINT            | 1106.78  |
| 5461    | CITY OF WEST POINT            | 4110.90  |
| 5462    | WEST POINT SCHOOLS            | 11304.98 |
| 5463    | WEST POINT SCHOOLS            | 3043.64  |
| 5464    | MAGNOLIA BOTTLED WATER CO.    | 8.00     |
| 5465    | MAILROOM CONSULTANT           | 275.36   |
| 5466    | QUILL CORPORATION             | 63.98    |
| 5467    | QUILL CORPORATION             | 103.92   |
| 5468    | PHILLIP'S HARDWARE            | 1619.42  |
| 5470    | LANN CHEMICAL                 | 47.84    |
| 5471    | GEORGE'S TIRE SERVICE         | 20.00    |
| 5472    | C SPIRE WIRELESS              | 47.36    |
| 5473    | C SPIRE WIRELESS              | 43.36    |
| 5474    | C SPIRE WIRELESS              | 34.33    |
| 5476    | C SPIRE WIRELESS              | 103.26   |
| 5477    | C SPIRE WIRELESS              | 265.64   |

CLAY COUNTY  
CLAIMS SUMMARY FOR: 6/2022  
FOR THE PERIOD ENDED JUNE 06, 2022

| CLAIM # | VENDOR NAME                    | AMOUNT  |
|---------|--------------------------------|---------|
| 5479    | BOB BARKER CO., INC.           | 154.60  |
| 5480    | SUNFLOWER STORE                | 155.55  |
| 5483    | LAWRENCE PRINTING COMPANY, INC | 86.86   |
| 5484    | LAWRENCE PRINTING COMPANY, INC | 90.26   |
| 5485    | LAWRENCE PRINTING COMPANY, INC | 112.76  |
| 5486    | CAPITAL ONE                    | 53.92   |
| 5487    | SYNERGETICS DCS, INC           | 3471.85 |
| 5491    | SILLOAM WATER DISTRICT         | 25.00   |
| 5492    | SILLOAM WATER DISTRICT         | 25.00   |
| 5493    | FUELMAN-SHERIFF                | 2222.78 |
| 5495    | U. S. POSTMASTER               | 160.00  |
| 5496    | RUSS WALKER                    | 270.00  |
| 5497    | JIM'S AUTO PARTS, WEST POINT   | 172.93  |
| 5498    | ELECTION SYSTEMS & SOFTWARE    | 648.33  |
| 5499    | DELUXE BUSINESS CHECKS         | 71.83   |
| 5500    | SAFEGUARD BUSINESS SYSTEMS     | 92.40   |
| 5501    | QUILL CORPORATION              | 18.99   |
| 5502    | QUILL CORPORATION              | 21.99   |
| 5503    | SAFEGUARD BUSINESS SYSTEMS     | 2092.17 |
| 5506    | INFOWARE 2                     | 900.00  |
| 5508    | CITY WATER & LIGHT DEPT.       | 721.70  |
| 5509    | CITY WATER & LIGHT DEPT.       | 259.36  |
| 5510    | CITY WATER & LIGHT DEPT.       | 1408.38 |
| 5511    | GOLDEN TRIANGLE WATER          | 32.50   |
| 5512    | JAMES E. MCWILLIAN             | 150.00  |
| 5513    | CASH & CARRY CLEANERS          | 30.00   |
| 5514    | MARLIN M STEWART III           | 722.50  |
| 5515    | MARLIN M STEWART III           | 872.50  |
| 5516    | MARLIN M STEWART III           | 760.00  |
| 5517    | MARLIN M STEWART III           | 661.25  |
| 5518    | MARLIN M STEWART III           | 797.50  |
| 5519    | MARLIN M STEWART III           | 562.50  |
| 5523    | BANCORP SOUTH                  | 4347.01 |
| 5525    | BANK OF COMMERCE               | 3462.96 |
| 5529    | A-1 CLEANING SERVICE           | 1500.00 |
| 5530    | ADMINISTRATIVE OFFICE OF COURT | 7464.25 |
| 5531    | MS STATE MEDICAL EXAMINER      | 1000.00 |
| 5534    | AMY G. BERRY - FEES            | 156.00  |
| 5535    | JOSEPH HILLMAN, MD             | 200.00  |
| 5536    | MAGNOLIA BOTTLED WATER CO.     | 27.00   |
| 5537    | H. SCOTT ROSS                  | 350.00  |
| 5538    | MELISSA GRIMES                 | 126.36  |
| 5541    | CLAY CO.DEPT./SOCIAL SERVICES  | 316.67  |
| 5542    | DISTRICT ATTORNEY'S OFFICE     | 175.00  |
| 5543    | GOLDEN TRIANGLE AREA           | 2583.33 |
| 5544    | INSURANCE CLEARING ACCOUNT     | 1790.77 |
| 5545    | HEALTH DEPT. OF CLAY COUNTY    | 3791.67 |
| 5546    | COMMUNITY COUNSELLING SERVICE  | 2000.00 |
| 5547    | NATIONAL GUARD OF MISSISSIPPI  | 200.00  |
| 5548    | RESERVE ACCOUNT                | 2000.00 |
| 5549    | CLAY COUNTY SWCD OFFICE        | 800.00  |
| 5550    | UNITED POSTAL SERVICE          | 625.00  |

CLAY COUNTY  
CLAIMS SUMMARY FOR: 6/2022  
FOR THE PERIOD ENDED JUNE 06, 2022

| CLAIM # | VENDOR NAME                    | AMOUNT   |
|---------|--------------------------------|----------|
| 5551    | VICTIM WITNESS PROGRAM         | 1683.96  |
| 5552    | VICTIM WITNESS PROGRAM         | 443.70   |
| 5553    | CLARISSA N. HARRIS             | 350.00   |
| 5578    | SUNFLOWER STORE                | 41.28    |
| 5579    | NORTH MS GROUND AMBULANCE LLC  | 35750.00 |
| 5584    | C SPIRE WIRELESS               | 223.30   |
| 5585    | C SPIRE WIRELESS               | 663.30   |
| 5595    | LOCAL GOVERNMENT RECORDS OFFIC | 192.00   |
| 5597    | RWJ CONSULTING, LLC            | 1984.23  |
| 5598    | FOUR-COUNTY ELEC POWER ASSN    | 167.00   |
| 5599    | FOUR-COUNTY ELEC POWER ASSN    | 49.00    |
| 5600    | FOUR-COUNTY ELEC POWER ASSN    | 42.00    |
| 5602    | FOUR-COUNTY ELEC POWER ASSN    | 53.00    |
| 5603    | FOUR-COUNTY ELEC POWER ASSN    | 200.00   |
| 5604    | FOUR-COUNTY ELEC POWER ASSN    | 87.00    |
| 5605    | FOUR-COUNTY ELEC POWER ASSN    | 46.00    |
| 5606    | FOUR-COUNTY ELEC POWER ASSN    | 57.00    |
| 5607    | FOUR-COUNTY ELEC POWER ASSN    | 34.00    |
| 5609    | FOUR-COUNTY ELEC POWER ASSN    | 35.00    |
| 5610    | FOUR-COUNTY ELEC POWER ASSN    | 47.00    |
| 5611    | FOUR-COUNTY ELEC POWER ASSN    | 56.00    |
| 5612    | FOUR-COUNTY ELEC POWER ASSN    | 63.00    |
| 5613    | FOUR-COUNTY ELEC POWER ASSN    | 120.00   |
| 5614    | FOUR-COUNTY ELEC POWER ASSN    | 73.00    |
| 5615    | FOUR-COUNTY ELEC POWER ASSN    | 35.00    |
| 5617    | CITY WATER & LIGHT DEPT.       | 1318.63  |
| 5618    | CITY WATER & LIGHT DEPT.       | 7274.69  |
| 5619    | CITY WATER & LIGHT DEPT.       | 2189.59  |
| 5680    | COOK'S CORRECTIONAL EQUIP.     | 608.72   |
| 5681    | SYSCO FOOD SERVICES, INC.      | 1669.67  |
| 5682    | US FOOD SERVICE                | 2157.94  |
| 5683    | A-1 APPLIANCE CENTER           | 136.95   |
| 5684    | ELMO'S MILITARY SURPLUS        | 91.98    |
| 5685    | GEORGE'S TIRE SERVICE          | 20.00    |
| 5686    | CAPITAL ONE                    | 56.88    |
| 5687    | CAPITAL ONE                    | 6.96     |
| 5688    | DAYLIGHT DONUT                 | 33.98    |
| 5689    | DAYLIGHT DONUT                 | 33.98    |
| 5690    | ATMOS ENERGY                   | 85.79    |
| 5691    | ATMOS ENERGY                   | 44.97    |
| 5692    | ATMOS ENERGY                   | 295.80   |
| 5702    | MARLIN M STEWART III           | 525.00   |
| 5703    | MARLIN M STEWART III           | 375.00   |
| 5744    | C SPIRE WIRELESS               | 740.00   |
| 5745    | GALLOWAY-CHANDLER-MCKINNEY     | 281.00   |
| 5747    | TEC                            | 25.68    |
| 5748    | LANN CHEMICAL                  | 47.84    |
| 5749    | FRANKLIN TELEPHONE COMPANY     | 2848.64  |
| 5750    | LANN CHEMICAL                  | 109.20   |
| 5751    | QUILL CORPORATION              | 75.57    |
| 5752    | QUILL CORPORATION              | 324.56   |
| 5753    | QUILL CORPORATION              | 16.79    |

CLAY COUNTY  
CLAIMS SUMMARY FOR: 6/2022  
FOR THE PERIOD ENDED JUNE 06, 2022

| CLAIM # | VENDOR NAME                    | AMOUNT  |
|---------|--------------------------------|---------|
| 5754    | QUILL CORPORATION              | 9.39    |
| 5755    | QUILL CORPORATION              | 51.98   |
| 5756    | MYTANA MFG. CO., INC.          | 317.44  |
| 5757    | QUILL CORPORATION              | 146.28  |
| 5758    | WOOD FRUITTICHER GROCERY CO    | 2950.97 |
| 5759    | MERCHANT CO.                   | 2324.85 |
| 5760    | VISTAR CORPORATION             | 2379.61 |
| 5762    | COMCAST CABLE                  | 361.96  |
| 5763    | A RIFKIN COMPANY               | 410.91  |
| 5764    | JIM'S AUTO PARTS, WEST POINT   | 189.99  |
| 5765    | CASH & CARRY CLEANERS          | 15.00   |
| 5766    | CASH & CARRY CLEANERS          | 20.00   |
| 5767    | ADAPTS ELECTRONIC MONITORING   | 22.00   |
| 5768    | U. S. POSTMASTER               | 160.00  |
| 5769    | MAGNOLIA BUSINESS SYSTEMS, INC | 85.14   |
| 5770    | MAGNOLIA BUSINESS SYSTEMS, INC | 189.99  |
| 5771    | MAGNOLIA BUSINESS SYSTEMS, INC | 227.39  |
| 5772    | MAGNOLIA BUSINESS SYSTEMS, INC | 175.79  |
| 5773    | MAGNOLIA BUSINESS SYSTEMS, INC | 330.31  |
| 5774    | MAGNOLIA BUSINESS SYSTEMS, INC | 146.05  |
| 5775    | MAGNOLIA BUSINESS SYSTEMS, INC | 150.21  |
| 5776    | MAGNOLIA BUSINESS SYSTEMS, INC | 133.75  |
| 5777    | MAGNOLIA BUSINESS SYSTEMS, INC | 282.14  |
| 5778    | MS INDUSTRIAL WASTE DISPOSAL   | 108.00  |
| 5779    | MS INDUSTRIAL WASTE DISPOSAL   | 180.00  |
| 5780    | MS INDUSTRIAL WASTE DISPOSAL   | 108.00  |
| 5781    | AMY G. BERRY - FEES            | 26.00   |
| 5782    | AMY G. BERRY - FEES            | 26.00   |
| 5783    | SILLOAM WATER DISTRICT         | 25.00   |
| 5784    | COMMUNITY COUNSELING           | 375.00  |
| 5786    | NORTH MS GROUND AMBULANCE LLC  | 838.82  |
| 5787    | PREMIER RADIOLOGY              | 51.01   |
| 5788    | PREMIER RADIOLOGY              | 7.20    |
| 5789    | PREMIER RADIOLOGY              | 54.61   |
| 5790    | PREMIER RADIOLOGY              | 36.75   |

\*\*\* FUND TOTALS \*\*\* 001 GENERAL COUNTY

212972.75

CLAY COUNTY  
CLAIMS SUMMARY FOR: 6/2022  
FOR THE PERIOD ENDED JUNE 06, 2022

| CLAIM #                             | VENDOR NAME          | AMOUNT  |
|-------------------------------------|----------------------|---------|
| 5242                                | SANDERS & ASSOCIATES | 2100.00 |
| 5243                                | SANDERS & ASSOCIATES | 1000.00 |
| 5244                                | SANDERS & ASSOCIATES | 6000.00 |
| *** FUND TOTALS *** 013 UTILIZATION |                      | 9100.00 |



CLAY COUNTY  
CLAIMS SUMMARY FOR: 6/2022  
FOR THE PERIOD ENDED JUNE 06, 2022

| CLAIM #   | VENDOR NAME                   | AMOUNT  |
|---|-------------------------------|---------|
| 5261  | QUILL CORPORATION             | 285.97  |
| 5365  | CAPITAL ONE                   | 203.95  |
| 5469  | N.M.S. COCA COLA BOTTLING CO. | 1359.15 |
| 5478  | CENTRAL RESTAURANT PRODUCTS   | 1462.76 |
| 5488  | EDGAR ROWAN BULLOCK           | 750.00  |
| 5507  | COMCAST CABLE                 | 99.44   |
| *** FUND TOTALS *** 040 SHERIFF'S INMATE CANTEN |                               | 4161.27 |

CLAY COUNTY  
CLAIMS SUMMARY FOR: 6/2022  
FOR THE PERIOD ENDED JUNE 06, 2022

| CLAIM #                                      | VENDOR NAME                | AMOUNT  |
|--|----------------------------|---------|
| 5589   | TOMBIGBEE REGIONAL LIBRARY | 2013.51 |
| *** FUND TOTALS *** 095 SPECIAL LIBRARY LEVY |                            | 2013.51 |

CLAY COUNTY  
CLAIMS SUMMARY FOR: 6/2022  
FOR THE PERIOD ENDED JUNE 06, 2022

PAGE 10  
APCSCPR

| CLAIM #                           | VENDOR NAME                 | AMOUNT   |
|-----------------------------------|-----------------------------|----------|
| 5260                              | QUILL CORPORATION           | 857.51   |
| 5334                              | SOUTHERN TELECOMMUNICATIONS | 277.64   |
| 5338                              | XEROX CORPORATION           | 25.91    |
| 5371                              | RED BUD SUPPLY INC          | 329.12   |
| 5504                              | BELLSOUTH / ATT             | 3466.00  |
| 5522                              | HANCOCK BANK                | 2866.94  |
| 5526                              | BANK OF COMMERCE            | 3857.27  |
| 5586                              | C SPIRE WIRELESS            | 518.00   |
| 5601                              | AT&T                        | 107.00   |
| 5616                              | AT&T                        | 213.32   |
| 5620                              | XEROX CORPORATION           | 25.91    |
| 5746                              | TEC                         | 9.19     |
| *** FUND TOTALS *** 097 E911 FUND |                             | 12553.81 |

CLAY COUNTY  
CLAIMS SUMMARY FOR: 6/2022  
FOR THE PERIOD ENDED JUNE 06, 2022

| CLAIM #                             | VENDOR NAME               | AMOUNT |
|-------------------------------------|---------------------------|--------|
| 5198                                | WEST GROUP PAYMENT CENTER | 436.30 |
| 5697                                | WEST GROUP PAYMENT CENTER | 436.30 |
| *** FUND TOTALS *** 104 LAW LIBRARY |                           | 872.60 |

CLAY COUNTY  
CLAIMS SUMMARY FOR: 6/2022  
FOR THE PERIOD ENDED JUNE 06, 2022

| CLAIM #   | VENDOR NAME              | AMOUNT  |
|---|--------------------------|---------|
| 5457  | TOTAL LAWN CARE          | 80.00   |
| 5475  | C SPIRE WIRELESS         | 28.34   |
| 5520  | MS DEVELOPMENT AUTHORITY | 1386.57 |
| 5700  | LONNIE DAVIDSON          | 220.00  |
| *** FUND TOTALS *** 114 VOLUNTEER FIRE DEPARTMENT |                          | 1714.91 |

CLAY COUNTY  
CLAIMS SUMMARY FOR: 6/2022  
FOR THE PERIOD ENDED JUNE 06, 2022

| CLAIM #   | VENDOR NAME              | AMOUNT  |
|---|--------------------------|---------|
| 5521  | MS DEVELOPMENT AUTHORITY | 2993.38 |
| *** FUND TOTALS *** 116 INSURANCE REBATE MONIES |                          | 2993.38 |

CLAY COUNTY  
CLAIMS SUMMARY FOR: 6/2022  
FOR THE PERIOD ENDED JUNE 06, 2022

| CLAIM # | VENDOR NAME                 | AMOUNT |
|---------|-----------------------------|--------|
| 5714    | FOUR-COUNTY ELEC POWER ASSN | 35.00  |
| 5715    | FOUR-COUNTY ELEC POWER ASSN | 122.00 |
| 5716    | SUNFLOWER STORE             | 20.61  |
| 5717    | SUNFLOWER STORE             | 21.96  |
| 5718    | SUNFLOWER STORE             | 19.26  |
| 5719    | SUNFLOWER STORE             | 12.84  |
| 5720    | SUNFLOWER STORE             | 18.09  |
| 5721    | SUNFLOWER STORE             | 24.57  |
| 5722    | SUNFLOWER STORE             | 12.84  |
| 5723    | SUNFLOWER STORE             | 36.68  |
| 5724    | SUNFLOWER STORE             | 26.93  |
| 5725    | SUNFLOWER STORE             | 15.92  |
| 5726    | SUNFLOWER STORE             | 61.41  |
| 5727    | SUNFLOWER STORE             | 191.45 |
| 5728    | SUNFLOWER STORE             | 17.43  |
| 5729    | SUNFLOWER STORE             | 19.26  |
| 5730    | SUNFLOWER STORE             | 19.26  |
| 5731    | SUNFLOWER STORE             | 15.59  |
| 5732    | SUNFLOWER STORE             | 42.31  |
| 5733    | SUNFLOWER STORE             | 25.68  |
| 5734    | SUNFLOWER STORE             | 1.25   |
| 5735    | SUNFLOWER STORE             | 20.99  |
| 5736    | SUNFLOWER STORE             | 18.34  |
| 5737    | SUNFLOWER STORE             | 34.77  |
| 5738    | SUNFLOWER STORE             | 26.57  |
| 5739    | SUNFLOWER STORE             | 17.90  |
| 5740    | SUNFLOWER STORE             | 20.35  |

\*\*\* FUND TOTALS \*\*\* 151 DISTRICT 1 ROAD

899.26

CLAY COUNTY  
CLAIMS SUMMARY FOR: 6/2022  
FOR THE PERIOD ENDED JUNE 06, 2022

| CLAIM #                                 | VENDOR NAME                  | AMOUNT  |
|---|------------------------------|---------|
| 5294                                    | CITY WATER & LIGHT DEPT.     | 35.00   |
| 5651                                    | WARREN PAVING                | 572.25  |
| 5652                                    | APAC-MISSISSIPPI, INC.       | 330.07  |
| 5653                                    | ORMAN'S WELDING & FAB., INC. | 2014.77 |
| 5655                                    | GOLDEN TRIANGLE WATER        | 41.50   |
| 5698                                    | C SPIRE WIRELESS             | 29.76   |
| 5699                                    | MS INDUSTRIAL WASTE DISPOSAL | 122.54  |
| 5701                                    | HENRY BACKHOE & DIRT SERVICE | 200.00  |
| 5704                                    | FOUR-COUNTY ELEC POWER ASSN  | 294.00  |
| 5713                                    | FOUR-COUNTY ELEC POWER ASSN  | 35.00   |
| *** FUND TOTALS *** 152 DISTRICT 2 ROAD |                              | 3674.89 |



CLAY COUNTY  
CLAIMS SUMMARY FOR: 6/2022  
FOR THE PERIOD ENDED JUNE 06, 2022

| CLAIM # | VENDOR NAME                  | AMOUNT  |
|---------|------------------------------|---------|
| 5451    | CALVERT-SPRADLING ENGINEERS  | 8955.43 |
| 5489    | HENRY BACKHOE & DIRT SERVICE | 150.00  |
| 5494    | INGRAMS GARAGE               | 184.25  |
| 5656    | JIM'S TIRE COMPANY           | 25.00   |
| 5657    | CARQUEST AUTO PARTS, INC.    | 47.90   |
| 5658    | CARQUEST AUTO PARTS, INC.    | 103.01  |
| 5659    | MCBRAYER QUICK LUBE          | 50.00   |
| 5660    | PHILLIP'S HARDWARE           | 31.75   |
| 5662    | PHILLIP'S HARDWARE           | 11.20   |
| 5665    | SILOAM WATER DISTRICT        | 38.50   |
| 5667    | CARQUEST AUTO PARTS, INC.    | 26.10   |
| 5668    | CARQUEST AUTO PARTS, INC.    | 170.03  |
| 5705    | FOUR-COUNTY ELEC POWER ASSN  | 76.00   |
| 5712    | FOUR-COUNTY ELEC POWER ASSN  | 35.00   |
| 5793    | C SPIRE WIRELESS             | 47.36   |

\*\*\* FUND TOTALS \*\*\* 153 DISTRICT 3 ROAD

9951.53

CLAY COUNTY  
CLAIMS SUMMARY FOR: 6/2022  
FOR THE PERIOD ENDED JUNE 06, 2022

| CLAIM # | VENDOR NAME                    | AMOUNT  |
|---------|--------------------------------|---------|
| 5422    | PRAIRIE MILLS FEED & FARM, LLC | 97.00   |
| 5423    | TIPTON'S TRUCK REPAIR LLC      | 60.00   |
| 5424    | TIPTON'S TRUCK REPAIR LLC      | 87.61   |
| 5425    | ARAMARK UNIFORM SERVICES INC   | 34.32   |
| 5426    | WARREN PAVING                  | 2663.70 |
| 5428    | PHILLIP'S HARDWARE             | 716.50  |
| 5429    | ARAMARK UNIFORM SERVICES INC   | 33.55   |
| 5430    | BIG STATE INDUSTRIAL SUPPLY    | 95.88   |
| 5431    | GIBSON EQUIPMENT REPAIR        | 11.66   |
| 5432    | PRESTON DOBBS TRUCKING AND     | 154.00  |
| 5433    | ARAMARK UNIFORM SERVICES INC   | 34.32   |
| 5669    | SLOAM WATER DISTRICT           | 25.00   |
| 5670    | JIM'S AUTO PARTS, WEST POINT   | 346.59  |
| 5671    | JIM'S AUTO PARTS, WEST POINT   | 110.14  |
| 5672    | JIM'S AUTO PARTS, WEST POINT   | 133.02  |
| 5673    | JIM'S AUTO PARTS, WEST POINT   | 33.48   |
| 5694    | TOTAL LAWN CARE                | 300.00  |
| 5695    | C SPIRE WIRELESS               | 406.31  |
| 5706    | FOUR-COUNTY ELEC POWER ASSN    | 153.00  |
| 5707    | FOUR-COUNTY ELEC POWER ASSN    | 32.70   |
| 5708    | FOUR-COUNTY ELEC POWER ASSN    | 79.63   |
| 5711    | FOUR-COUNTY ELEC POWER ASSN    | 35.00   |

\*\*\* FUND TOTALS \*\*\* 154 DISTRICT 4 ROAD

4210.41

543

CLAY COUNTY  
CLAIMS SUMMARY FOR: 6/2022  
FOR THE PERIOD ENDED JUNE 06, 2022

| CLAIM # | VENDOR NAME                  | AMOUNT  |
|---------|------------------------------|---------|
| 5415    | APAC-MISSISSIPPI, INC.       | 193.28  |
| 5416    | GOLDEN TRIANGLE TIRE SVC LLC | 251.00  |
| 5417    | PHILLIP'S HARDWARE           | 82.66   |
| 5418    | PHILLIP'S HARDWARE           | 11.99   |
| 5419    | PHILLIP'S HARDWARE           | 35.99   |
| 5420    | RED BOD SUPPLY INC           | 190.99  |
| 5435    | TIPTON'S TRUCK REPAIR LLC    | 60.00   |
| 5436    | TIPTON'S TRUCK REPAIR LLC    | 87.61   |
| 5437    | ERGON ASPHALT & EMULSIONS    | 5203.51 |
| 5439    | ERGON ASPHALT & EMULSIONS    | 4783.51 |
| 5674    | SUN CREEK WATER ASSN.        | 17.00   |
| 5675    | TRACY MCKEE                  | 19.63   |
| 5676    | CLAY COUNTY CO-OP            | 150.00  |
| 5677    | CARQUEST AUTO PARTS, INC.    | 79.99   |
| 5678    | CARQUEST AUTO PARTS, INC.    | 139.53  |
| 5679    | JIM'S AUTO PARTS, WEST POINT | 31.98   |
| 5693    | C SPIRE WIRELESS             | 40.75   |
| 5696    | PHEBA QUICK STOP             | 66.54   |
| 5709    | FOUR-COUNTY ELEC POWER ASSN  | 173.00  |
| 5710    | FOUR-COUNTY ELEC POWER ASSN  | 35.00   |
| 5741    | CLAY COUNTY CO-OP            | 360.00  |
| 5742    | HANCOCK BANK                 | 1867.01 |
| 5743    | BARNES WALKER                | 300.00  |

\*\*\* FUND TOTALS \*\*\* 155 DISTRICT 5 ROAD

14180.97

CLAY COUNTY  
CLAIMS SUMMARY FOR: 6/2022  
FOR THE PERIOD ENDED JUNE 06, 2022

| CLAIM # | VENDOR NAME                  | AMOUNT  |
|---------|------------------------------|---------|
| 5373    | TIPTON'S TRUCK REPAIR LLC    | 87.61   |
| 5374    | JIM'S TIRE COMPANY           | 110.00  |
| 5375    | CLAY COUNTY CO-OP            | 10.95   |
| 5376    | CLAY COUNTY CO-OP            | 49.90   |
| 5377    | CLAY COUNTY CO-OP            | 77.93   |
| 5378    | CARQUEST AUTO PARTS, INC.    | 5.65    |
| 5379    | CARQUEST AUTO PARTS, INC.    | 31.07   |
| 5380    | CARQUEST AUTO PARTS, INC.    | 121.96  |
| 5381    | CARQUEST AUTO PARTS, INC.    | 58.49   |
| 5382    | CARQUEST AUTO PARTS, INC.    | 10.48   |
| 5383    | CARQUEST AUTO PARTS, INC.    | 5.60    |
| 5384    | CARQUEST AUTO PARTS, INC.    | 56.24   |
| 5385    | CARQUEST AUTO PARTS, INC.    | 25.97   |
| 5386    | ARAMARK UNIFORM SERVICES INC | 36.72   |
| 5387    | G & O SUPPLY CO, INC         | 1040.94 |
| 5388    | ARAMARK UNIFORM SERVICES INC | 36.72   |
| 5389    | TIPTON'S TRUCK REPAIR LLC    | 60.00   |
| 5390    | COLUMBUS WHOLESale TIRE      | 518.29  |
| 5391    | WREN BODY WORKS              | 170.30  |
| 5392    | GOLDEN TRIANGLE TIRE SVC LLC | 115.00  |
| 5393    | SPEEDCO SPEED                | 783.87  |
| 5394    | APAC-MISSISSIPPI, INC.       | 131.43  |
| 5395    | G & O SUPPLY CO, INC         | 448.00  |
| 5396    | ARAMARK UNIFORM SERVICES INC | 32.68   |
| 5397    | PHILLIP'S HARDWARE           | 2.19    |
| 5398    | PHILLIP'S HARDWARE           | 105.45  |
| 5399    | PHILLIP'S HARDWARE           | 87.97   |
| 5400    | PHILLIP'S HARDWARE           | 119.99  |
| 5401    | PHILLIP'S HARDWARE           | 49.98   |
| 5402    | PRESTON DOBBS TRUCKING AND   | 385.00  |
| 5403    | O'REILLY AUTO PARTS          | 36.85   |
| 5404    | O'REILLY AUTO PARTS          | 174.09  |
| 5405    | O'REILLY AUTO PARTS          | 113.36  |
| 5406    | O'REILLY AUTO PARTS          | 150.96  |
| 5407    | FUELMAN D1                   | 346.42  |
| 5408    | CARQUEST AUTO PARTS, INC.    | 23.90   |
| 5409    | CARQUEST AUTO PARTS, INC.    | 15.95   |
| 5410    | CITY WATER & LIGHT DEPT.     | 41.20   |
| 5411    | PHILLIP'S HARDWARE           | 13.99   |
| 5412    | PHILLIP'S HARDWARE           | 43.90   |
| 5413    | MCBRAYER QUICK LUBE          | 50.00   |
| 5414    | SOUTHERN TELECOMMUNICATIONS  | 43.82   |
| 5587    | CARQUEST AUTO PARTS, INC.    | 8.83    |
| 5588    | CARQUEST AUTO PARTS, INC.    | 100.34  |
| 5636    | CARQUEST AUTO PARTS, INC.    | 31.16   |
| 5637    | CARQUEST AUTO PARTS, INC.    | 47.39   |
| 5638    | CARQUEST AUTO PARTS, INC.    | 12.95   |
| 5639    | CARQUEST AUTO PARTS, INC.    | 9.15    |
| 5640    | CARQUEST AUTO PARTS, INC.    | 167.82  |
| 5641    | CARQUEST AUTO PARTS, INC.    | 18.65   |
| 5642    | CARQUEST AUTO PARTS, INC.    | 16.14   |
| 5643    | CARQUEST AUTO PARTS, INC.    | 32.68   |

CLAY COUNTY  
CLAIMS SUMMARY FOR: 6/2022  
FOR THE PERIOD ENDED JUNE 06, 2022

| CLAIM #                                   | VENDOR NAME                     | AMOUNT  |
|---|---------------------------------|---------|
| 5644                                      | JIM'S AUTO PARTS, WEST POINT    | 58.93   |
| 5645                                      | JIM'S AUTO PARTS, WEST POINT    | 439.98  |
| 5646                                      | JIM'S TIRE COMPANY              | 25.00   |
| 5647                                      | AUTOZONE LLC                    | 184.26  |
| 5648                                      | AEAMARK UNIFORM SERVICES INC    | 36.72   |
| 5649                                      | C SPIRE WIRELESS                | 60.31   |
| 5794                                      | WATERS TRUCK & TRACTOR CO., INC | 1914.93 |
| *** FUND TOTALS *** 161 DISTRICT 1 BRIDGE |                                 | 8996.06 |

CLAY COUNTY  
CLAIMS SUMMARY FOR: 6/2022  
FOR THE PERIOD ENDED JUNE 06, 2022

| CLAIM # | VENDOR NAME                  | AMOUNT  |
|---------|------------------------------|---------|
| 5249    | PHILIP'S HARDWARE            | 15.99   |
| 5250    | ORMAN'S WELDING & FAB., INC. | 491.16  |
| 5251    | COLD MIX, INC.               | 947.52  |
| 5252    | PHILIP'S HARDWARE            | 11.76   |
| 5253    | PHILIP'S HARDWARE            | 5.98    |
| 5254    | PRESTON DOBBS TRUCKING AND   | 77.00   |
| 5255    | ORMAN'S WELDING & FAB., INC. | 710.51  |
| 5256    | GEORGE'S TIRE SERVICE        | 229.00  |
| 5257    | G & O SUPPLY CO, INC         | 612.00  |
| 5258    | BRAD'S ON SITE SERVICE, LLC  | 215.00  |
| 5259    | BRAD'S ON SITE SERVICE, LLC  | 465.00  |
| 5284    | JIM'S TIRE COMPANY           | 25.00   |
| 5285    | JIM'S AUTO PARTS, WEST POINT | 40.95   |
| 5286    | JIM'S AUTO PARTS, WEST POINT | 45.98   |
| 5287    | JIM'S AUTO PARTS, WEST POINT | 49.59   |
| 5288    | JIM'S AUTO PARTS, WEST POINT | 90.49   |
| 5289    | JIM'S AUTO PARTS, WEST POINT | 130.21  |
| 5290    | JIM'S AUTO PARTS, WEST POINT | 349.00  |
| 5291    | JIM'S AUTO PARTS, WEST POINT | 358.04  |
| 5292    | GEORGE'S TIRE SERVICE        | 20.40   |
| 5293    | H & R AGRI-POWER             | 436.36  |
| 5295    | CLAY COUNTY CO-OP            | 3450.00 |
| 5298    | G & O SUPPLY CO, INC         | 858.00  |
| 5299    | JIM'S AUTO PARTS, WEST POINT | 15.98   |
| 5317    | RACKLEY OIL COMPANY, INC     | 5284.05 |
| 5366    | WARREN PAVING                | 259.25  |
| 5481    | GOLDEN TRIANGLE TREE SERVICE | 3500.00 |
| 5482    | RACKLEY OIL COMPANY, INC     | 5549.10 |
| 5532    | JIM'S AUTO PARTS, WEST POINT | 101.02  |
| 5533    | JIM'S AUTO PARTS, WEST POINT | 85.87   |
| 5761    | TIPTON'S TRUCK REPAIR LLC    | 1740.84 |

\*\*\* FUND TOTALS \*\*\* 162 DISTRICT 2 BRIDGE

26171.05

CLAY COUNTY  
CLAIMS SUMMARY FOR: 6/2022  
FOR THE PERIOD ENDED JUNE 06, 2022

| CLAIM #                                   | VENDOR NAME                  | AMOUNT |
|---|------------------------------|--------|
| 5663                                      | TERRY'S GARAGE AND REPAIR    | 120.01 |
| 5664                                      | TERRY'S GARAGE AND REPAIR    | 483.68 |
| 5666                                      | HENRY BACKHOE & DIRT SERVICE | 300.00 |
| *** FUND TOTALS *** 163 DISTRICT 3 BRIDGE |                              | 903.69 |

CLAY COUNTY  
CLAIMS SUMMARY FOR: 6/2022  
FOR THE PERIOD ENDED JUNE 06, 2022

| CLAIM #                                   | VENDOR NAME        | AMOUNT  |
|---|--------------------|---------|
| 5427                                      | PHILLIP'S HARDWARE | 1074.75 |
| 5434                                      | THOMPSON MACHINERY | 1312.11 |
| 5792                                      | EARNEST WALKER     | 840.00  |
| *** FUND TOTALS *** 164 DISTRICT 4 BRIDGE |                    | 3226.86 |



CLAY COUNTY  
CLAIMS SUMMARY FOR: 6/2022  
FOR THE PERIOD ENDED JUNE 06, 2022

| CLAIM #                                   | VENDOR NAME              | AMOUNT   |
|---|--------------------------|----------|
| 5421                                      | THOMPSON MACHINERY       | 1432.83  |
| 5438                                      | THOMPSON MACHINERY       | 1312.10  |
| 5650                                      | RACKLEY OIL COMPANY, INC | 11210.25 |
| *** FUND TOTALS *** 165 DISTRICT 5 BRIDGE |                          | 13955.18 |

CLAY COUNTY  
CLAIMS SUMMARY FOR: 6/2022  
FOR THE PERIOD ENDED JUNE 06, 2022

| CLAIM #   | VENDOR NAME            | AMOUNT  |
|---|------------------------|---------|
| 5654  | APAC-MISSISSIPPI, INC. | 1295.06 |
| *** FUND TOTALS *** 171 D-1 ROAD CONSTRUCTION - USE TAX |                        | 1295.06 |

CLAY COUNTY  
CLAIMS SUMMARY FOR: 6/2022  
FOR THE PERIOD ENDED JUNE 06, 2022

| CLAIM #   | VENDOR NAME                | AMOUNT   |
|---|----------------------------|----------|
| 5235  | CLAY COUNTY CO-OP          | 3450.00  |
| 5297  | PRESTON DOBBS TRUCKING AND | 693.00   |
| 5315  | APAC-MISSISSIPPI, INC.     | 338.65   |
| 5661  | RACKLEY OIL COMPANY, INC   | 8005.90  |
| *** FUND TOTALS *** 173 D-3 ROAD CONSTRUCTION - USE TAX |                            | 12487.55 |

CLAY COUNTY  
CLAIMS SUMMARY FOR: 6/2022  
FOR THE PERIOD ENDED JUNE 06, 2022

| CLAIM #   | VENDOR NAME              | AMOUNT   |
|---|--------------------------|----------|
| 5309  | APAC-MISSISSIPPI, INC.   | 327.47   |
| 5311  | APAC-MISSISSIPPI, INC.   | 1671.67  |
| 5368  | FUELMAN DL               | 407.07   |
| 5369  | THOMPSON MACHINERY       | 1312.11  |
| 5370  | RACKLEY OIL COMPANY, INC | 7289.25  |
| *** FUND TOTALS *** 361 DIST 1 R & B CONSTRUCTION USE TAX - B & I |                          | 11007.57 |

CLAY COUNTY  
CLAIMS SUMMARY FOR: 6/2022  
FOR THE PERIOD ENDED JUNE 06, 2022

| CLAIM # | VENDOR NAME                  | AMOUNT  |
|---------|------------------------------|---------|
| 5188    | PHILLIP'S HARDWARE           | 27.54   |
| 5190    | PHILLIP'S HARDWARE           | 5.09    |
| 5196    | FUELMAN-SAN                  | 1547.49 |
| 5203    | PHILLIP'S HARDWARE           | 2.00    |
| 5204    | PHILLIP'S HARDWARE           | 6.28    |
| 5205    | PHILLIP'S HARDWARE           | 102.34  |
| 5214    | PHILLIP'S HARDWARE           | 8.99    |
| 5215    | PHILLIP'S HARDWARE           | 2.00    |
| 5216    | PHILLIP'S HARDWARE           | 52.52   |
| 5217    | PHILLIP'S HARDWARE           | 103.89  |
| 5218    | PHILLIP'S HARDWARE           | 2.00    |
| 5307    | CLAY COUNTY CO-OP            | 96.95   |
| 5322    | PHILLIP'S HARDWARE           | 27.98   |
| 5341    | FUELMAN-SAN                  | 1331.43 |
| 5342    | JIM'S AUTO PARTS, WEST POINT | 74.89   |
| 5353    | FUELMAN-SAN                  | 1298.84 |
| 5355    | PHILLIP'S HARDWARE           | 68.97   |
| 5356    | PHILLIP'S HARDWARE           | 12.36   |
| 5364    | PHILLIP'S HARDWARE           | 7.48    |
| 5440    | PHILLIP'S HARDWARE           | 2.00    |
| 5490    | SILOAM WATER DISTRICT        | 25.00   |
| 5505    | FUELMAN-SAN                  | 1566.79 |
| 5524    | BANK OF COMMERCE             | 2500.31 |
| 5527    | JIM'S AUTO PARTS, WEST POINT | 13.99   |
| 5528    | CARQUEST AUTO PARTS, INC.    | 209.75  |
| 5539    | TIPTON'S TRUCK REPAIR LLC    | 45.00   |
| 5540    | TIPTON'S TRUCK REPAIR LLC    | 55.00   |
| 5554    | SUNFLOWER STORE              | 15.92   |
| 5555    | SUNFLOWER STORE              | 21.93   |
| 5556    | SUNFLOWER STORE              | 19.02   |
| 5557    | SUNFLOWER STORE              | 15.42   |
| 5558    | SUNFLOWER STORE              | 23.91   |
| 5559    | SUNFLOWER STORE              | 7.31    |
| 5560    | SUNFLOWER STORE              | 18.00   |
| 5561    | SUNFLOWER STORE              | 15.42   |
| 5562    | SUNFLOWER STORE              | 7.31    |
| 5563    | SUNFLOWER STORE              | 16.62   |
| 5564    | SUNFLOWER STORE              | 18.41   |
| 5565    | SUNFLOWER STORE              | 12.84   |
| 5566    | SUNFLOWER STORE              | 14.62   |
| 5567    | SUNFLOWER STORE              | 30.05   |
| 5568    | SUNFLOWER STORE              | 18.41   |
| 5569    | SUNFLOWER STORE              | 15.42   |
| 5570    | SUNFLOWER STORE              | 7.31    |
| 5571    | SUNFLOWER STORE              | 18.41   |
| 5572    | SUNFLOWER STORE              | 7.31    |
| 5573    | SUNFLOWER STORE              | 15.42   |
| 5574    | SUNFLOWER STORE              | 18.40   |
| 5575    | SUNFLOWER STORE              | 18.41   |
| 5576    | SUNFLOWER STORE              | 14.62   |
| 5577    | SUNFLOWER STORE              | 7.31    |
| 5608    | FOUR-COUNTY ELEC POWER ASSN  | 57.00   |

CLAY COUNTY  
CLAIMS SUMMARY FOR: 6/2022  
FOR THE PERIOD ENDED JUNE 06, 2022

| CLAIM #                            | VENDOR NAME                    | AMOUNT   |
|------------------------------------|--------------------------------|----------|
| 5621                               | SUNFLOWER STORE                | 15.62    |
| 5622                               | SUNFLOWER STORE                | 16.92    |
| 5623                               | SUNFLOWER STORE                | 19.20    |
| 5624                               | SUNFLOWER STORE                | 19.20    |
| 5625                               | SUNFLOWER STORE                | 14.62    |
| 5626                               | SUNFLOWER STORE                | 15.42    |
| 5627                               | SUNFLOWER STORE                | 19.20    |
| 5628                               | SUNFLOWER STORE                | 15.42    |
| 5629                               | SUNFLOWER STORE                | 15.90    |
| 5630                               | SUNFLOWER STORE                | 16.76    |
| 5631                               | SUNFLOWER STORE                | 18.40    |
| 5632                               | SUNFLOWER STORE                | 7.31     |
| 5633                               | SUNFLOWER STORE                | 17.37    |
| 5634                               | SUNFLOWER STORE                | 15.42    |
| 5635                               | SUNFLOWER STORE                | 18.41    |
| 5785                               | GTR SOLID WASTE MGMT AUTHORITY | 5018.63  |
| 5791                               | JIM'S AUTO PARTS, WEST POINT   | 395.00   |
| *** FUND TOTALS *** 400 SANITATION |                                | 15230.48 |

CLAY COUNTY  
CLAIMS SUMMARY FOR: 6/2022  
FOR THE PERIOD ENDED JUNE 06, 2022

| CLAIM #   | VENDOR NAME                    | AMOUNT   |
|---|--------------------------------|----------|
| 5580  | MS DEPT OF PUBLIC SAFETY       | 600.00   |
| 5581  | MS DEPT OF PUBLIC SAFETY       | 1226.00  |
| 5582  | MS DEPT OF PUBLIC SAFETY       | 70.00    |
| 5583  | STATE TREASURER                | 28921.20 |
| 5590  | GOLDEN TRIANGLE CRIME STOPPERS | 217.50   |
| *** FUND TOTALS *** 650 JUDICIAL ASSESSMENT CLEARING FUND |                                | 31034.70 |

CLAY COUNTY  
CLAIMS SUMMARY FOR: 6/2022  
FOR THE PERIOD ENDED JUNE 06, 2022

| CLAIM #                                  | VENDOR NAME               | AMOUNT  |
|--|---------------------------|---------|
| 5596                                     | EAST MS COMMUNITY COLLEGE | 4816.93 |
| *** FUND TOTALS *** 690 EMJC MAINTENANCE |                           | 4816.93 |



CLAY COUNTY  
CLAIMS SUMMARY FOR: 6/2022  
FOR THE PERIOD ENDED JUNE 06, 2022

PAGE 32  
APCSCPR

| CLAIM #   | VENDOR NAME                  | AMOUNT  |
|---|------------------------------|---------|
| 5591  | EAST MISS. COMMUNITY COLLEGE | 3078.29 |
| *** FUND TOTALS *** 692 EMCC CAPITAL IMPROVEMENT CAMPAIGN |                              | 3078.29 |

CLAY COUNTY  
CLAIMS SUMMARY FOR: 6/2022  
FOR THE PERIOD ENDED JUNE 06, 2022

| CLAIM # | VENDOR NAME                  | AMOUNT  |
|---------|------------------------------|---------|
| 5592    | EAST MISS. COMMUNITY COLLEGE | 2622.70 |

\*\*\* FUND TOTALS \*\*\* 697 VO-TECH MAINTENANCE 2622.70

CLAY COUNTY  
CLAIMS SUMMARY FOR: 6/2022  
FOR THE PERIOD ENDED JUNE 06, 2022

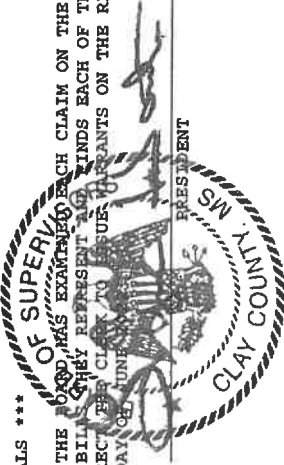
| CLAIM #                                 | VENDOR NAME                  | AMOUNT  |
|---|------------------------------|---------|
| 5593                                    | EAST MISS. COMMUNITY COLLEGE | 2337.26 |
| *** FUND TOTALS *** 698 VO-TECH CAPITAL |                              | 2337.26 |

| CLAIM # | VENDOR NAME                   | AMOUNT  |
|---------|-------------------------------|---------|
| 5594    | TOMBIGBEE RIVER WTR MGMT DIST | 2223.67 |

\*\*\* FUND TOTALS \*\*\* 699 TOMBIGBEE RIVER VALLEY WATER MGMT.DIST. 2223.67

\*\*\* DOCKET TOTALS \*\*\* 418686.34

I CERTIFY THAT THE BOARD HAS EXAMINED EACH CLAIM ON THE JUNE, 2022 DOCKET AND THE BILLS THEY REPRESENT AND FINDS EACH OF THE ABOVE DUE AND PAYABLE AND DIRECT THE CLERK TO ISSUE WARRANTS ON THE RESPECTIVE FUNDS. THIS THE 06TH DAY OF JUNE, 2022



PRESIDENT

# EXHIBIT C



# Clay County Floodplain Administrator

Clay County Administrator

Randolph "Randy" Jones, CFM

P.O. Box 815  
West Point, Mississippi 39773  
Phone (662) 494-3124  
Fax (662) 492-4059  
E-mail: [supervisors@claycounty.ms.gov](mailto:supervisors@claycounty.ms.gov)

June 6, 2022

County Board of Supervisors  
The Honorable Lynn Horton, President  
P.O. Box 815  
West Point, MS 39773

Dear Mr. Horton,

Enclosed you will find my current summary of actions May 2, 2022 through June 6, 2022 and incurred expense as Clay County Floodplain Administrator for continuing education, consulting, travel, and inspections for the Board of Supervisors' review. I am attaching a detailed invoice for my actions and expenses as well as file copies of correspondence. I am enclosing my CEU Certification for your Board minutes.

Thank you so much for your interest and diligence in attending to issues that protect citizens and property, as well as, saving the tax payers' money.

Sincerely,

A handwritten signature in black ink, appearing to read "Randolph W. Jones".

Randolph W. Jones, CFM  
Clay County Floodplain Administrator

RWJ/rj

Encl as  
cf. Clay County Chancery Clerk

RWJ Consulting, LLC

Invoice for: Clay County Floodplain Administration  
May 2, 2022 – June 6, 2022

Clay County Board of Supervisors  
Attn: The Honorable Lynn Horton, President  
P.O. Box 815, West Point, MS 39773

| ITEM  | HOURS  | *MILEAGE                                    | TOTAL      |
|---|--|---|------------|
| 05/11/22 Conference, research, travel, letter, Ashley Ewing, 1086 Melton Bottom Road, West Point, MS 39773                              | 1.0 @ \$24.00=\$24.00<br>1.0 @ \$48.00=\$48.00     | See Attachment                              | \$72.00    |
| 05/13/22 Conference, research, travel, letter Mary & Lee Scruggs (Linda Young) 7154 Henryville Road, Pheba, MS 39755                    | 1.0 @ \$24.00=\$24.00<br>1.0 @ \$48.00=\$48.00     | See Attachment                              | \$72.00    |
| 05/16/22 Conference, research, travel, letter Tracy Jefferson (Doris Ann Jefferson) 828 Joe Myers Road, Cedar Bluff, M 39741            | 1.0 @ \$24.00=\$24.00<br>1.0 @ \$48.00=\$48.00     | See Attachment                              | \$72.00    |
| 05/23/22 Conference, research, travel, letter Chris Phillips (George & Mary Phillips) 891 Wilson Road, Cedar Bluff, MS 39741            | 1.0 @ \$24.00=\$24.00<br>1.0 @ \$48.00=\$48.00     | See Attachment                              | \$72.00    |
| 05/23/22 Conference, research, travel, letter Jamie Roberts (Flem Owens Estate) 1854 Mhoon Valley Road, West Point, MS 39773            | 1.0 @ \$24.00=\$24.00<br>0.5 @ \$48.00=\$24.00     | See Attachment                              | \$48.00    |
| 05/23/22 Conference, research, travel, letter Richard Brooks, 1417 Pinkerton Road, West Point, MS 39773                                 | 1.0 @ \$24.00=\$24.00<br>0.5 @ \$48.00=\$24.00     | See Attachment                              | \$48.00    |
| 05/27/22 Conference, research, travel, letter Anner Cunningham (Ada Griffin Estate) 28924 Highway 50 East, West Point, MS 39773         | 1.0 @ \$24.00=\$24.00<br>1.0 @ \$48.00=\$48.00     | See Attachment                              | \$72.00    |
| 05/27/22 Conference, research, travel, letter Lashonda Holmes (Ned Smith) Griffith Road, Cedar Bluff, MS 39741                          | 1.0 @ \$24.00=\$24.00<br>1.0 @ \$48.00=\$48.00     | See Attachment                              | \$72.00    |
| 06/02/22 Conference, research, travel, letter Richelle West (Christopher Pollan) 133 West Road, West Point, MS 39773                    | 1.0 @ \$24.00=\$24.00<br>0.5 @ \$48.00=\$24.00     | See Attachment                              | \$48.00    |
| 06/02/22 Conference, research, travel, letter Tyrone Saverson 6610 Highway 46, Cedar Bluff, MS 39741                                    | 1.0 @ \$24.00=\$24.00<br>1.0 @ \$48.00=\$48.00     | See Attachment                              | \$72.00    |
| 06/02/22 Conference, research, travel, letter Kevin Johnson & Raven Davidson 3751 East Hazelwood Road, West Point, MS 39773             | 1.0 @ \$24.00=\$24.00<br>1.0 @ \$48.00=\$48.00     | See Attachment                              | \$72.00    |
| 06/05/22 Conference, research, travel, letter Chain, Victoria (Ronnie & Kathie Kirkley) Pate Road, West Point, MS 39773                 | 1.0 @ \$24.00=\$24.00<br>1.0 @ \$48.00=\$48.00     | See Attachment                              | \$72.00    |
| 06/05/22 Conference, research, travel, letter Michael Murray Odie & Ervin White Estate) 15346 Highway 46, Pheba, MS 39755               | 1.0 @ \$24.00=\$24.00<br>1.0 @ \$48.00=\$48.00     | See Attachment                              | \$72.00    |
| 05/02/22 – 06/07/22 Travel Driving time, AFMM CEU conference, report and copies for Board of Supervisors, Tax Assessor, Property Owners | 16.7 @ \$24.00=\$400.80<br>12.0 @ \$48.00=\$576.00 | 247.3 @ \$0.58 = \$143.43<br>See Attachment | \$1,120.23 |
| TOTALS  | \$1,840.80   | \$143.43                                    | \$1,984.23 |

<sup>1</sup> Driving time billed at half technical/research rate. Copies of correspondence, research, and letters are attached.

Respectfully Submitted:

Please mail to: RWJ Consulting, LLC  
P.O. Box 1284  
West Point, Mississippi 39773

CF: Chancery Clerk

RWJ/rj  
Encl as

# EXHIBIT D





## CERTIFICATE OF ATTENDANCE

This is to certify attendance of

*Randolph Jones*

at the

*Association of Floodplain Managers of Mississippi*

*Annual Conference held in Biloxi, MS*

*May 2-4, 2022*

*Allison Ingram*  
Allison Ingram, President

12 CECs

# EXHIBIT E



# MJCJA INVOICE

*Invoice to be paid in full to MJCJA by Sunday, June 26, 2022.*

COUNTY

CLAY

JUDGE'S NAME

Thomas Hampton

FROM:

Mississippi Justice Court Judges Association

DATE SUBMITTED

RE:

**Registration Fee Invoice**  
**Mississippi Justice Court Judges Assn. Summer Convention**  
**Golden Nugget Biloxi - July 17-21, 2022**

Please submit this completed invoice to your county for payment:



MJCJA Convention Registration Fee  
(Amount Required to Attend)

\$ 500.00

**Total Due MJCJA by June 26, 2022**

**\$ 500.00**

**Please make checks payable to:**

*Mississippi Justice Court Judges Association (MJCJA), and include 2022 Summer Convention and the name of the judge attending on the memo line.*

**Remit to: Hon. Jason Thornton**  
**MJCJA Convention Chairman**  
**9205 Rock Hill Road**  
**Vanceleave, MS 39565**

**The above fee must be submitted to MJCJA by: June 26, 2022**

**Please attach a copy of this invoice to the check when mailed. Thank you!**

**Print**



Lucas

Quote Number: 10534487

Version: 1

Prepared For: CLAY COUNTY BOARD OF SUPERVISORS

Attn:

Remit to: Stryker Medical

P.O. Box 93308

Chicago, IL 60673-3308

Rep: Julie Riekhof

Email: julie.riekhof@stryker.com

Phone Number:

Quote Date: 05/24/2022

Expiration Date: 08/23/2022

| Delivery Address |                                  | End User - Shipping - Billing |                                  | Bill To Account |                                  |
|------------------|----------------------------------|-------------------------------|----------------------------------|-----------------|----------------------------------|
| Name:            | CLAY COUNTY BOARD OF SUPERVISORS | Name:                         | CLAY COUNTY BOARD OF SUPERVISORS | Name:           | CLAY COUNTY BOARD OF SUPERVISORS |
| Account #:       | 1297928                          | Account #:                    | 1297928                          | Account #:      | 1237196                          |
| Address:         | 365 COURT ST                     | Address:                      | 365 COURT ST                     | Address:        | PO BOX 815                       |
|                  | WEST POINT                       |                               | WEST POINT                       |                 | WEST POINT                       |
|                  | Mississippi 39773-2954           |                               | Mississippi 39773-2954           |                 | Mississippi 39773                |

Equipment Products:

| #                | Product      | Description  | Qty | Sell Price  | Total       |
|------------------|--------------|--|-----|-------------|-------------|
| 1.0              | 99576-000063 | LUCAS 3, v3.1 Chest Compression System, Includes Hard Shell Case, Slim Back Plate, (2) Patient Straps, (1) Stabilization Strap, (2) Suction Cups, (1) Rechargeable Battery and Instructions for use With Each Device | 1   | \$14,906.44 | \$14,906.44 |
| 2.0              | 11576-000046 | LUCAS Disposable Suction Cup (3 pack)  | 1   | \$113.76    | \$113.76    |
| 3.0              | 11576-000089 | LUCAS Grip Tape for Slim Back Plate  | 1   | \$23.84     | \$23.84     |
| 4.0              | 11576-000071 | LUCAS External Power Supply  | 1   | \$300.96    | \$300.96    |
| Equipment Total: |              |  |     |             | \$15,345.00 |

Price Totals:

Grand Total: \$15,345.00

Prices: In effect for 30 days

Terms: Net 30 Days

Contact your local Sales Representative for more information about our flexible payment options.

569

Amy G Berry

**From:** BJ <bjmccclenton@gmail.com>  
**Sent:** Tuesday, May 31, 2022 3:36 PM  
**To:** Amy Berry  
**Subject:** Fwd: [EXTERNAL] RFTAP

----- Forwarded message -----  
**From:** BJ <bjmccclenton@gmail.com>  
**Date:** Tue, May 31, 2022, 3:21 PM  
**Subject:** Re: [EXTERNAL] RFTAP  
**To:** Brad Smith <Brad.Smith@mid.ms.gov>

Thank you we haven't recieved a letter so I didn't know.

That would be great!

BJ

On Tue, May 31, 2022, 2:51 PM Brad Smith <Brad.Smith@mid.ms.gov> wrote:

Your Round 12 application for SE Clay is still approved pending availability of funds. We'll have the funds on July 1, but I can't send official notification and part II of the application until then.

**From:** BJ <bjmccclenton@gmail.com>  
**Sent:** Tuesday, May 31, 2022 2:26 PM  
**To:** Brad Smith <Brad.Smith@mid.ms.gov>  
**Subject:** [EXTERNAL] RFTAP

**CAUTION:** This email originated from outside of MID mail system. Do not click links or open attachments unless you recognize the sender and know the content is safe.

Good morning Brad,

I wanted to check on the status of Clay Counties RFTAP application.

Thank you,

BJ

Disclaimer: This message may contain confidential information. If you are not the intended recipient you are notified that disclosing, copying, distributing or taking any action in reliance on the contents of this information is strictly prohibited. In the event that you have received this message in error, please destroy this email and kindly notify the sender by reply. If you or your employer does not consent to using email for messages of this kind, please notify us immediately by replying to this email. The Mississippi Insurance Department does not endorse any opinions, conclusions, and/or other information contained in this message that does not relate to the official business of the Mississippi Insurance Department.

**RESOLUTION OF THE CLAY COUNTY BOARD OF SUPERVISORS  
FOR INCLUSION IN THE WEST POINT TIME CAPSULE OF  
AUGUST 22, 2022**

---

WHEREAS, the residents of Clay County were deeply affected by the COVID-19 Pandemic, having experienced illness, hospitalization, loss of loved ones and economic loss.

WHEREAS, the primary concerns of the Clay County Board of Supervisors throughout the course of the COVID-19 pandemic were the safety, well-being, and economic stability of Clay County residents and the local business community.

WHEREAS, the Clay County Board of Supervisors closely monitored the spread of the COVID-19 virus by following the recommendations and data provided by Clay County's Emergency Management Director, Centers for Disease Control, the State of Mississippi's Health Officer, Mississippi Emergency Management Association and the Governor of the State of Mississippi.

WHEREAS, the Clay County Board of Supervisors endeavored to respond promptly to the COVID-19 pandemic by instituting mask mandates, implementing life saving restrictions for local business operations and imposing other parameters designed for the purposes of promoting social distance and limiting person to person transmission of COVID-19.

WHEREAS, the Clay County Board of Supervisors, after recognizing the transmission of the COVID-19 virus was decreasing, moved to modify and ultimately lift public health restrictions as a result of the diligence and responsiveness of Clay County residents.

BE IT RESOLVED THAT, the Clay County Board of Supervisors is appreciative of the County's willingness to adhere to the recommendations and restrictions imposed by the Board.

BE IT FURTHER RESOLVED THAT, this Resolution and other items of significance to the County be placed and sealed in the West Point Time Capsule there to remain until such time as the

time capsule shall be opened in 2072.

BE IT FURTHER RESOLVED by all who shall read this Resolution after final passage that we survived the COVID-19 Pandemic as a result of the diligence, resilience and fortitude of the residents of Clay County, Mississippi.

After due discussion, it was moved by Supervisor \_\_\_\_\_ and seconded by Supervisor \_\_\_\_\_ that this Resolution be adopted as the official act of the Clay County Board of Supervisors.

The motion was called to vote and each Supervisor voted as follows, to-wit;

|   |     |
|---|-----|
| Supervisor, D. Lynn Horton, District 1    | AYE |
| Supervisor, Luke Lummus, District 2       | AYE |
| Supervisor, R.B. Davis, District 3        | AYE |
| Supervisor, Shelton L. Deanes, District 4 | AYE |
| Supervisor, Joe Chandler, District 5      | AYE |

The motion, passing by a majority vote of the Clay County Board of Supervisors, was declared carried and this resolution adopted.

SO ORDERED, on this \_\_\_\_\_ day of \_\_\_\_\_, 2022.

**CLAY COUNTY, MISSISSIPPI  
BOARD OF SUPERVISORS**

\_\_\_\_\_  
**D. LYNN HORTON, PRESIDENT**

**ATTEST:**

\_\_\_\_\_  
**AMY G. BERRY  
CLAY COUNTY CHANCERY CLERK**



# EXHIBIT F

**A RESOLUTION OF THE BOARD OF SUPERVISORS OF CLAY COUNTY, MISSISSIPPI RECOGNIZING AND COMMEMORATING THE SERVICE OF BURNELL McDONALD, SUPERINTENDENT OF THE WEST POINT CONSOLIDATED SCHOOL DISTRICT**

BE IT RESOLVED, the Board of Supervisors of Clay County, Mississippi wishes to recognize and commemorate the service of Burnell McDonald, Superintendent of the West Point Consolidated School District; and

BE IT FURTHER RESOLVED, Burnell McDonald was born on May 26, 1965 in New Orleans, Louisiana. Thereafter, his family moved to Madison, Mississippi, where Mr. McDonald and his siblings attended elementary and high school. He graduated with honors in 1983 from Madison-Ridgeland High School; and

BE IT FURTHER RESOLVED, after graduation from high school, Burnell McDonald attended Mississippi State University, where he obtained a Bachelor of Science degree in 1987 in Elementary Education, and a Master of Science degree in 1994 in Educational Leadership; and

BE IT FURTHER RESOLVED, Burnell McDonald is the proud father of four daughters, Kimberly, Faith, Brandi and Chloe, and Matthew, his son, who is deceased; and

BE IT FURTHER RESOLVED, Burnell McDonald has over 35 years of experience as an educator and has worked in numerous schools and grade levels, touching the lives of countless students. He began his career as an elementary teacher at Maben Elementary School in Maben, Mississippi. He then served as Assistant Principal at East Webster High School in Webster County, Mississippi and also as Assistant Principal at Fifth Street Junior High School in West Point, Mississippi. He later served as Principal for West Clay Elementary in Clay County, Alexander Elementary in Starkville, Mississippi, and Houston Middle School in Houston, Mississippi; and

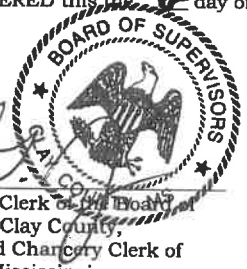
WHEREAS, in July of 2011, Burnell McDonald was appointed as Superintendent of the West Point School District, which later became the West Point Consolidated School District. He currently serves in this position and will retire at the end of this school year, having faithfully and diligently served West Point and Clay County with honor and distinction.

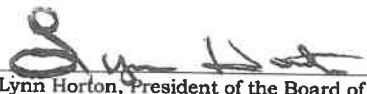
NOW THEREFORE, BE IT RESOLVED by the Board of Supervisors of Clay County, Mississippi, that it hereby recognizes and commemorates Burnell McDonald for his educational leadership as Superintendent of the West Point Consolidated School District and for his steadfast commitment to the educational and academic achievement of the students in West Point and Clay County. The Clay County Board of Supervisors extends its best wishes to Mr. McDonald for the next chapter of his life.

Upon Motion by Supervisor Deanes and second by Supervisor Lummus, the above Resolution was duly adopted with a unanimous vote by the Board.

SO ORDERED this 14 day of June, 2022.

ATTEST:

  
Amy G. Berry, Clerk of the Board of  
Supervisors of Clay County,  
Mississippi and Chancery Clerk of  
Clay County, Mississippi

  
Lynn Horton, President of the Board of  
Supervisors of Clay County, Mississippi

# EXHIBIT G

IN THE CIRCUIT COURT OF LOWNDES COUNTY, MISSISSIPPI  
MAY TERM, 2022

IN RE: ORDER SETTING COMPENSATION FOR CYNTHIA H. ZELINKA,  
OFFICIAL COURT REPORTER FOR THE SIXTEENTH DISTRICT CIRCUIT  
COURT

There having come on for consideration the matter of compensation of Cynthia H. Zelinka, Official Court Reporter for the Sixteenth District Circuit Court, it is hereby ordered by the undersigned Judge of the Sixteenth District Circuit Court that effective October 1, 2022, pursuant to Section 9-13-19, Mississippi Code of 1972, Annotated, the salary for Cynthia H. Zelinka, Official Court Reporter for the Sixteenth District Circuit Court, is hereby set at \$64,000, which is to be prorated between the counties of the Sixteenth District Circuit Court as follows:

|                  |     |
|------------------|-----|
| Lowndes County   | 37% |
| Clay County      | 24% |
| Oktibbeha County | 24% |
| Noxubee County   | 15% |

Said salary shall remain in effect until further order of this Court.

The Circuit Clerk of Lowndes County is to run a copy of this order on the minutes of the court and to send a copy to the Bookkeeping Department of Lowndes County. In addition, the Circuit Clerk of Lowndes County is to send a copy of this order to the Circuit Clerks of Clay, Oktibbeha, and Noxubee Counties who are to run this order on their minutes of court and send a copy to the Bookkeeping Department of their respective counties. Further, the Lowndes Circuit Clerk is to send a certified copy of this order to the Administrative Office of Courts.

SO ORDERED AND ADJUDGED this the 26<sup>th</sup> day of May, 2022.

FILED  
MAY 26 2022

*Jason Backdale*  
Circuit Clerk

*[Signature]*  
CIRCUIT JUDGE

FILED  
Clay County  
MAY 31 2022  
*[Signature]*

174/690

# EXHIBIT H



Lucas

Quote Number: 10534487

Version: 1

Prepared For: CLAY COUNTY BOARD OF SUPERVISORS

Attn:

Remit to: Stryker Medical

P.O. Box 93308

Chicago, IL 60673-3308

Rep: Julie Riekhof

Email: julie.riekhof@stryker.com

Phone Number:

Quote Date: 05/24/2022

Expiration Date: 08/23/2022

| Delivery Address |                                  | End User - Shipping - Billing |                                  | Bill To Account |                                  |
|------------------|----------------------------------|-------------------------------|----------------------------------|-----------------|----------------------------------|
| Name:            | CLAY COUNTY BOARD OF SUPERVISORS | Name:                         | CLAY COUNTY BOARD OF SUPERVISORS | Name:           | CLAY COUNTY BOARD OF SUPERVISORS |
| Account #:       | 1297928                          | Account #:                    | 1297928                          | Account #:      | 1237196                          |
| Address:         | 365 COURT ST                     | Address:                      | 365 COURT ST                     | Address:        | PO BOX 815                       |
|                  | WEST POINT                       |                               | WEST POINT                       |                 | WEST POINT                       |
|                  | Mississippi 39773-2954           |                               | Mississippi 39773-2954           |                 | Mississippi 39773                |

Equipment Products:

| #                | Product      | Description  | Qty | Sell Price  | Total       |
|------------------|--------------|--|-----|-------------|-------------|
| 1.0              | 99576-000063 | LUCAS 3, v3.1 Chest Compression System, Includes Hard Shell Case, Slim Back Plate, (2) Patient Straps, (1) Stabilization Strap, (2) Suction Cups, (1) Rechargeable Battery and Instructions for use With Each Device | 1   | \$14,906.44 | \$14,906.44 |
| 2.0              | 11576-000046 | LUCAS Disposable Suction Cup (3 pack)  | 1   | \$113.76    | \$113.76    |
| 3.0              | 11576-000089 | LUCAS Grip Tape for Slim Back Plate  | 1   | \$23.84     | \$23.84     |
| 4.0              | 11576-000071 | LUCAS External Power Supply  | 1   | \$300.96    | \$300.96    |
| Equipment Total: |              |  |     |             | \$15,345.00 |

Price Totals:

Grand Total: \$15,345.00

Prices: In effect for 30 days

Terms: Net 30 Days

Contact your local Sales Representative for more information about our flexible payment options.

**Capital Terms and Conditions:**

Deal Consummation: This is a quote and not a commitment. This quote is subject to final credit, pricing, and documentation approval. Legal documentation must be signed before your equipment can be delivered. Documentation will be provided upon completion of our review process and your selection of a payment schedule. Confidentiality Notice: Recipient will not disclose to any third party the terms of this quote or any other information, including any pricing or discounts, offered to be provided by Stryker to Recipient in connection with this quote, without Stryker's prior written approval, except as may be requested by law or by lawful order of any applicable government agency. A copy of Stryker Medical's Acute Care capital terms and conditions can be found at [https://techweb.stryker.com/Terms\\_Conditions/index.html](https://techweb.stryker.com/Terms_Conditions/index.html). A copy of Stryker Medical's Emergency Care capital terms and conditions can be found at <https://www.strykeremergencycare.com/terms>.

### Emergency Services Agreement

This agreement (the "Agreement") is effective the 23 day of May, 2019 (the "Effective Date"), by and between North Mississippi Ground Ambulance, LLC, a Mississippi limited liability corporation ("NMGA") and Clay County, Mississippi, a body politic ("Clay County");

Whereas the parties have previously had an agreement under the terms of which NMGA provided emergency and non-emergency ambulance services to Clay County, and the parties have been negotiating and have reached a new superseding agreement which they wish to commit to writing.

In consideration of the premises and mutual covenants and promises contained herein, the parties agree as follows:

1. NMGA shall be the single provider of emergency and non-emergency ground ambulance service for the County under the terms of this Agreement. NMGA shall be responsible for all emergency ambulance transports originating in Clay County (the "County") and will be coordinated through the Clay County E911 dispatch center.
2. The geographical scope of the service will include Clay County. The Service Agreement shall begin on the Effective Date and extend for a period of three (3) years but shall renew automatically at the end of the third year, for an additional year under the same terms and conditions, unless either party provides 60 day written notice of non-renewal, with no cause necessary, or in the event the parties cannot reach an agreement contemplated by paragraph 3.
3. Clay County shall pay NMGA the sum of \$143,000.00 per year (the "Base Payment") payable in 4 equal quarterly installments of \$35,750.00 each, with the first payment due on June 10, 2019, and on the tenth day of each 3 months thereafter. After the third year the parties shall consider the renegotiation of the annual base payment. The County will apply annually for the EMSOF grant through the Mississippi State Department of Health as long as funding is available and the Base Payment shall be reduced by the amount of any grant Clay County receives and is utilized by NMGA. It is understood that any property acquired by grant funds must remain as a part of the county inventory. Either party may terminate this Agreement without cause by providing the other party with sixty (60) days advance written notice of termination. In the event NMGA terminates this Agreement and Clay County has tendered payment in advance as contemplated by the parties, Clay County shall be refunded a pro rata portion of those payments made for services not realized due to cancellation of the Agreement.
4. Except as otherwise specifically provided in this Agreement, NMGA shall provide two 24 hour staffed advance life support trucks (the "Primary Ambulances") allocated to Clay County only. These trucks cannot be pulled to other counties to run emergency or non-emergency calls except in the event of mutual aid. Mutual aid is considered to be a pending/holding 911 call in a neighboring county. If one of the two Primary Ambulances based in Clay County is in Tupelo in response to a call or transfer initiated in Clay County, it can bring or transport patients back to Clay County providing the ambulance shall not be unreasonably delayed except to wait and return a patient to Clay County and cannot be sent to another county. Otherwise, this Primary Ambulance must return immediately to Clay County for coverage.



5. NMGA shall respond to all emergency ambulance service requests that are received through the Clay County E911 dispatch center. NMGA shall coordinate with the County to develop and maintain a system which effectively provides for prompt notice of any calls, emergency or otherwise.

6. Assuming availability and no weather or traffic related delays, targets for Ambulance response times must not exceed ten (10) minutes for an average of all emergency calls in the City of West Point and twenty (20) minutes for an average of emergency calls to any other given location within the County from the time the dispatched information is given to NMGA until the ambulance arrives on scene.

All ambulance units provided by NMGA for emergency response must at all times be fully equipped with all necessary advanced life support ("ALS") equipment and staffed to operate at the advanced life support level on all emergency ambulance responses, including immediate and urgent services. NMGA shall comply with all applicable Mississippi State Department of Health policies and approved medical standards.

7. NMGA shall be responsible for providing the cost of the radios for the radio and dispatch system through MSWIN, and NMGA shall pay the cost for the base equipment and thereafter the annual fee for group membership that will be compatible to the radio and dispatch system already being utilized at the County's dispatch center. To the extent, NMGA utilizes EMSOF grant funds for other equipment purchases, the equipment will remain a part of the Clay County inventory. Otherwise, NMGA shall be the owner of the equipment.

8. As provided in paragraph 38, NMGA shall provide all necessary insurance and compliance documentation required to function in the State of Mississippi as a contracted ALS emergency ambulance service provider at no cost to the County. Such insurance shall include Clay County as an additional insured thereon.-

9. Extrication and rescue activities will remain the responsibility of the County's Fire Department. NMGA will not be responsible for these activities and shall have no liability related thereto.

10. NMGA pledges to be visible and be a partner in the Clay County community. In addition to emergency response, NMGA as availability of vehicles and man power will participate in job and health fairs and the like and will be requested to provide emergency ambulance coverage/standby by request, when available, to special functions including but not limited to sporting events and games, community events, extended fire suppression calls, hazardous material operations, and any other activities deemed medically necessary by NMGA to provide preemptive emergency medical care to the visitors, citizens, and emergency service personnel within the County.

11. NMGA shall be responsible for securing on-line and off-line medical control as defined in the Rules and Regulations of the Mississippi State Department of Health, Division of Emergency Medical Services.

12. Both parties shall afford equal employment opportunities and shall not discriminate based

on race, color, religion, gender, age, physical disability, sexual orientation, veteran status or natural origin, with respect to employment.

13. The conduct and appearance of NMGA employees shall in accordance with NMGA and North Mississippi Health Services, Inc' s policies and guidelines.

14. NMGA shall perform quality improvement activities and continuously upgrade its performance.

15. NMGA shall provide quality clinical care.

16. Requests for assistance to medical emergencies typically are made through the 9-1-1 phone system. These calls are answered by Clay County's designated dispatch center. Personnel at the County's dispatch center will identify the caller's needs and determine if medical aid is needed, and will follow priority dispatching protocols to identify the nature of the call and location. This information will be dispatched by radio. Clay County's dispatch center is operated by Clay County employees under direct supervision of the Clay County's designated personnel.

17. In addition to the trucks referred to in paragraph 4 of this Agreement, NMGA shall provide ready access to one 24 hour ALS call truck. The call truck will be for the purpose of improving 24 hour ambulance availability in Clay County. This ambulance will be staged at the NMWP Ambulance Center location. The truck will be allocated for emergency or non-emergency calls mainly in Clay County. This crew will be on call and called in as needed when a front line truck is on an out of town transfer or when call volumes are high and there is a need.

18. Patient treatment and transport shall be performed in accordance with all applicable laws and regulations which may include contact with an online or offline Medical Control officer.

19. Patients shall be transported to appropriate receiving facilities in accordance with current Stark regulations and protocol.

20. For emergency calls the minimum emergency ambulance crew staffing will be an EMT and Paramedic who meet the requirements of the Mississippi EMS Laws, Rules and Regulations (Title 15 Part 12 Subpart 31) for EMT Basic ( Chapter 6) and Paramedic.( Chapter 7)..

21. NMGA will be responsible for all invoicing/billing to patients transported. NMGA acknowledges that some of those transported may not have insurance or be able to pay. NMGA acknowledges that the County will not be responsible to NMGA for services provided to those who do not have insurance or ability to pay. To the extent applicable NMGA shall comply with 501(R) of the IRS Code.

22. NMGA shall provide the quality clinical care. NMGA will provide appropriate levels of performance and reliability.

23. The essential areas where performance by NMGA must be achieved include:

- Ambulance response times as stated above

- Ambulance equipment and supply requirements as required by state law
- Ambulance staffing levels -as stated above
- Clinical performance consistent with appropriate medical standards and protocols
- Comprehensive quality improvement
- Community satisfaction with the services provided
- Compatibility with County and its emergency services

24. NMGA will provide to the County proof of all required permitting and licensing as required by the State of Mississippi and all agencies, departments and body politics thereof and the same must be maintained and in effect at all times.

25. NMGA's personnel shall have the right and responsibility to interact directly with the medical personnel on all issues related to patient care.

26. Upon written notice to the Chief Legal Officer for NMGA, the County official or designee may request that any NMGA employee attend any audit involving any incident in which they were involved. However in no event will the medical care provided be discussed in order to assure compliance with the federal regulations on privacy aka HIPAA.

27. NMGA will develop and implement a comprehensive continuous quality improvement process.

28. NMGA will develop and strictly enforce policies for infection control and contaminated materials disposal to decrease the chance of communicable disease exposure in the course of its services. NMGA will provide for the collection, cleaning, and/or disposal of all its contaminated items.

29. All ambulances shall meet the standards of licensure and certification as set forth by the Mississippi State Department of Health.

30. NMGA will maintain its vehicles in a good working order consistent with the manufacturer's specifications. In addition, detailed records shall be maintained as to work performed, costs related to repairs, and operating and repair costs analyses where appropriate. All costs of maintenance and repairs, including parts, supplies, spare parts and inventories of supplies, labor, subcontracted services and costs of extended warranties, will be at NMGA expense.

31. NMGA will have sole responsibility for furnishing all equipment necessary to provide required service. All on-board equipment, medical supplies and personal communications equipment utilized by the provider will meet the minimum requirements set for by the State of Mississippi.

32. Clay County E911 will complete, maintain and provide as requested, adequate records and documentation demonstrating its performance compliance. Official response time records will be determined by the County's Computer Aided Dispatch (CAD) system.

33. All costs of maintenance and repairs, including parts, supplies, spare parts and inventories of supplies, labor, subcontracted services and costs of extended warranties, will be at NMGA's expense.
34. NMGA will endeavor, where practical, to employ residents of Clay County, who meet the state standards, NMGA standards and NMHS standards.
35. NMGA expressly warrants that, in the event of a default under the terms of a proposal that may proceed to a contractual obligation, it will work with the County to insure continuous and uninterrupted delivery of services, regardless of the nature or causes underlying such breach for a reasonable period of time.
36. In the event of default, by either party, including non-payment, the non-breaching party, shall provide a 30 day written notice of default to the breaching party, which will allow breaching party to cure the default prior to the being issued a 45 day written notice of termination or default of the contract. The non-breaching party may then immediately terminate any contract should provider fail to perform properly any of its obligations.
37. NMGA will be responsible for and will hold any and all required federal, state or local permits or licenses required to perform its obligations under any potential agreement with the County.
38. NMGA shall maintain adequate liability and errors and omissions insurance or self-insured trust, insuring against its actions with minimum limits of \$1,000,000.00 per occurrence and \$2,000,000.00 aggregate, and such other insurance such as Workers' Compensation insurance or Workers Compensation self-insured trust, as required by law as well as contemplated by paragraph 8 of this Agreement, and will provide proof of such at the time that a contractual agreement with the County is executed, and upon each anniversary thereafter, and will maintain such coverage throughout the term of this Agreement. To the extent the coverage is self-insured by trust or otherwise, NMGA shall maintain its compliance, qualifying as necessary, with applicable law
39. NMGA will retain all documents pertaining to a contractual agreement with the County for five (5) years from the end of the fiscal year following the date of service; for any further period that may be required by law; and until all Federal/State audits are complete and exceptions resolved for the agreed upon period. Upon request, and except as otherwise restricted by law, NMGA will make these records available to authorized representatives of the County, the State of Mississippi, and the United States Government.
40. This agreement shall be construed according to the laws of the State of Mississippi. If any provision of this Agreement in any way contravenes applicable law, such provision shall be deemed to be deleted, and if any term of this Agreement shall be declared by final adjudication to be illegal or contrary to public policy, it shall not affect the validity of any other terms or provisions of this Agreement.
41. Any and all controversies or claims arising out of or relating to this Agreement, its performance, breach or termination, shall be vested exclusively in the jurisdiction and venue of

Clay County, Mississippi courts.

42. The prevailing party shall be entitled to recover its attorney's fees and any related costs reasonably incurred in the enforcement of its rights under this Agreement.

43. This Agreement constitutes the complete agreement between the parties, and any and all promises, agreements, representations, or covenants previously made are hereby abrogated to the terms of this Agreement. This Agreement may not be modified except in writing by each party.

44. This agreement may be executed in any number of counterparts and by different parties in separate counterparts. Each counterpart when so executed shall be deemed to be an original and all of which together shall constitute one and the same agreement.

45. This Agreement shall be binding upon the parties and assigns. The rights under this Agreement may not be assigned without the advance written consent of the other party. This agreement may not be amended except in a writing signed by both parties.

WITNESS our signatures as of the Effective Date, each signor representing that he has explicit authority to do so.

NORTH MISSISSIPPI GROUND AMBULANCE, LLC

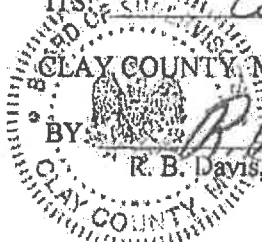
BY: 

ITS: 

CLAY COUNTY, MISSISSIPPI

BY: 

R. B. Davis, President





Lucas

Quote Number: 10534487

Version: 1

Prepared For: CLAY COUNTY BOARD OF SUPERVISORS

Attn:

Remit to: Stryker Medical

P.O. Box 93308

Chicago, IL 60673-3308

Rep: Julie Riekhof

Email: julie.riekhof@stryker.com

Phone Number:

Quote Date: 05/24/2022

Expiration Date: 08/23/2022

| Delivery Address |                                  | End User - Shipping - Billing |                                  | Bill To Account |                                  |
|------------------|----------------------------------|-------------------------------|----------------------------------|-----------------|----------------------------------|
| Name:            | CLAY COUNTY BOARD OF SUPERVISORS | Name:                         | CLAY COUNTY BOARD OF SUPERVISORS | Name:           | CLAY COUNTY BOARD OF SUPERVISORS |
| Account #:       | 1297928                          | Account #:                    | 1297928                          | Account #:      | 1237196                          |
| Address:         | 365 COURT ST                     | Address:                      | 365 COURT ST                     | Address:        | PO BOX 815                       |
|                  | WEST POINT                       |                               | WEST POINT                       |                 | WEST POINT                       |
|                  | Mississippi 39773-2954           |                               | Mississippi 39773-2954           |                 | Mississippi 39773                |

Equipment Products:

| #                | Product      | Description  | Qty | Sell Price  | Total       |
|------------------|--------------|--|-----|-------------|-------------|
| 1.0              | 99576-000063 | LUCAS 3, v3.1 Chest Compression System, Includes Hard Shell Case, Slim Back Plate, (2) Patient Straps, (1) Stabilization Strap, (2) Suction Cups, (1) Rechargeable Battery and Instructions for use With Each Device | 1   | \$14,906.44 | \$14,906.44 |
| 2.0              | 11576-000046 | LUCAS Disposable Suction Cup (3 pack)  | 1   | \$113.76    | \$113.76    |
| 3.0              | 11576-000089 | LUCAS Grip Tape for Slim Back Plate  | 1   | \$23.84     | \$23.84     |
| 4.0              | 11576-000071 | LUCAS External Power Supply  | 1   | \$300.96    | \$300.96    |
| Equipment Total: |              |  |     |             | \$15,345.00 |

Price Totals:

Grand Total:

\$15,345.00

Prices: In effect for 30 days

Terms: Net 30 Days

Contact your local Sales Representative for more information about our flexible payment options.

**Capital Terms and Conditions:**

Deal Consummation: This is a quote and not a commitment. This quote is subject to final credit, pricing, and documentation approval. Legal documentation must be signed before your equipment can be delivered. Documentation will be provided upon completion of our review process and your selection of a payment schedule. Confidentiality Notice: Recipient will not disclose to any third party the terms of this quote or any other information, including any pricing or discounts, offered to be provided by Stryker to Recipient in connection with this quote, without Stryker's prior written approval, except as may be requested by law or by lawful order of any applicable government agency. A copy of Stryker Medical's Acute Care capital terms and conditions can be found at [https://techweb.stryker.com/Terms\\_Conditions/index.html](https://techweb.stryker.com/Terms_Conditions/index.html). A copy of Stryker Medical's Emergency Care capital terms and conditions can be found at <https://www.strykeremergencycare.com/terms>.

# EXHIBIT I



**RESOLUTION OF THE CLAY COUNTY BOARD OF SUPERVISORS  
FOR INCLUSION IN THE WEST POINT TIME CAPSULE OF  
AUGUST 22, 2022**

---

WHEREAS, the residents of Clay County were deeply affected by the COVID-19 Pandemic, having experienced illness, hospitalization, loss of loved ones and economic loss.

WHEREAS, the primary concerns of the Clay County Board of Supervisors throughout the course of the COVID-19 pandemic were the safety, well-being, and economic stability of Clay County residents and the local business community.

WHEREAS, the Clay County Board of Supervisors closely monitored the spread of the COVID-19 virus by following the recommendations and data provided by Clay County's Emergency Management Director, Centers for Disease Control, the State of Mississippi's Health Officer, Mississippi Emergency Management Association and the Governor of the State of Mississippi.

WHEREAS, the Clay County Board of Supervisors endeavored to respond promptly to the COVID-19 pandemic by instituting mask mandates, implementing life saving restrictions for local business operations and imposing other parameters designed for the purposes of promoting social distance and limiting person to person transmission of COVID-19.

WHEREAS, the Clay County Board of Supervisors, after recognizing the transmission of the COVID-19 virus was decreasing, moved to modify and ultimately lift public health restrictions as a result of the diligence and responsiveness of Clay County residents.

BE IT RESOLVED THAT, the Clay County Board of Supervisors is appreciative of the County's willingness to adhere to the recommendations and restrictions imposed by the Board.

BE IT FURTHER RESOLVED THAT, this Resolution and other items of significance to the County be placed and sealed in the West Point Time Capsule there to remain until such time as the

time capsule shall be opened in 2072.

BE IT FURTHER RESOLVED by all who shall read this Resolution after final passage that we survived the COVID-19 Pandemic as a result of the diligence, resilience and fortitude of the residents of Clay County, Mississippi.

After due discussion, it was moved by Supervisor Deane and seconded by Supervisor Lynn that this Resolution be adopted as the official act of the Clay County Board of Supervisors.

The motion was called to vote and each Supervisor voted as follows, to-wit;

|   |     |
|---|-----|
| Supervisor, D. Lynn Horton, District 1    | AYE |
| Supervisor, Luke Lummus, District 2       | AYE |
| Supervisor, R.B. Davis, District 3        | AYE |
| Supervisor, Shelton L. Deanes, District 4 | AYE |
| Supervisor, Joe Chandler, District 5      | AYE |

The motion, passing by a majority vote of the Clay County Board of Supervisors, was declared carried and this resolution adopted.

SO ORDERED, on this \_\_\_\_\_ day of \_\_\_\_\_, 2022.

CLAY COUNTY, MISSISSIPPI  
BOARD OF SUPERVISORS

\_\_\_\_\_  
D. LYNN HORTON, PRESIDENT

ATTEST:

\_\_\_\_\_  
AMY G. BERRY  
CLAY COUNTY CHANCERY CLERK

# EXHIBIT J

# RESOLUTION REQUESTING GOVERNOR TO PROCLAIM

## A STATE OF EMERGENCY

WHEREAS, on Feb 20<sup>th</sup>, 2019, the Board of Supervisors (~~City Council~~)  
of the County of Clay found that due to the impact (or imminent threat)  
of Flooding / Wind a condition of extreme peril  
(earthquake, flood, hazmat, hurricane, severe storm, other)  
to life and property did exist in Clay County; and

WHEREAS, on June 6th, 2022, in accordance with State Law 33-15-17(d) the  
Board of Supervisors declared that an emergency does exist throughout said county; and

WHEREAS, it has now been found that local resources are unable to cope with the  
effects of said emergency;

NOW, THEREFORE, IT IS HEREBY DECLARED AND ORDERED that a copy of  
this declaration be forwarded to the Governor of Mississippi with the request that he proclaim  
the County (~~City~~) of Clay to be in a State of Emergency; and

IT IS FURTHER RESOLVED that Torrey J Williams, EMA Director  
(Person) (Title)  
is thereby designated as the authorized representative of the County (~~City~~) of  
Clay for the purpose of receipt, processing, and coordination of all inquiries  
and requirements necessary to obtain available State and Federal assistance.

DATE: 6/6/2022

ATTEST:

[Signature]  
Clerk of the Board of  
Supervisors (or ~~City~~),  
County of Clay  
State of Mississippi

[Signature]  
Mayor (Board President)

[Signature]  
Board Member

[Signature]  
Board Member

[Signature]  
Board Member

[Signature]  
Board Member

PROCLAMATION OF EXISTENCE OF A LOCAL EMERGENCY  
(by City Council or County Board of Supervisors)

WHEREAS, Clay County the ~~City Council~~ /or Board of Supervisors does hereby find that conditions of extreme peril to the safety of persons and property have arisen within said City /County, caused by Flooding / Wind

(Severe storm, tornado, damaging winds, flash flooding, river flooding

drought, wildland fire, structural fire, hail, hazardous material incident, epidemic, hurricane, earthquake, other)

commencing on or about 8 AM /PM on the 20<sup>th</sup> day of Feb, 2019; and

WHEREAS, the aforesaid conditions of extreme peril warrant and necessitate the proclamation of the existence of a local emergency in order to provide for the health and safety of the citizens and the protection of their property within the affected jurisdiction;

NOW, THEREFORE, IT IS HEREBY PROCLAIMED that in accordance with Section 33-15-17(d), Mississippi Code of 1972, as amended, a local emergency now exists throughout said ~~City~~ /County; and shall be reviewed every thirty (30) days until such local emergency is no longer in effect and proclaimed terminated by the ~~City Council~~ / Board of Supervisors of the ~~City~~ / County of Clay, State of Mississippi.

IT IS FURTHER PROCLAIMED AND ORDERED that all ~~City~~ / County agencies and departments shall render all possible assistance and discharge their emergency responsibilities as set forth in the ~~City~~ / County Emergency Operations Plan.

DATE: 6/6/2022

[Signature]  
Mayor / President of Board of Supervisors

ATTEST:

[Signature]  
Councilperson / Supervisor

[Signature]  
Clerk of City / Chancery  
Clerk for Board of Supervisors

[Signature]  
Councilperson / Supervisor

Clay  
City / or County, State of MS

[Signature]  
Councilperson / Supervisor

[Signature]  
Councilperson / Supervisor

RESOLUTION REQUESTING GOVERNOR TO PROCLAIM

A STATE OF EMERGENCY

WHEREAS, on Jan 1<sup>st</sup>, 2020, the Board of Supervisors (~~City Council~~)  
of the County of Clay found that due to the impact (or imminent threat)  
of COVID-19 a condition of extreme peril  
(earthquake, flood, hazmat, hurricane, severe storm, other)  
to life and property did exist in Clay County; and

WHEREAS, on June 6th, 2022, in accordance with State Law 33-15-17(d) the  
Board of Supervisors declared that an emergency does exist throughout said county; and

WHEREAS, it has now been found that local resources are unable to cope with the  
effects of said emergency;

NOW, THEREFORE, IT IS HEREBY DECLARED AND ORDERED that a copy of  
this declaration be forwarded to the Governor of Mississippi with the request that he proclaim  
the County (~~City~~) of Clay to be in a State of Emergency; and

IT IS FURTHER RESOLVED that Torrey J Williams, EMA Director  
(Person) (Title)  
is thereby designated as the authorized representative of the County (~~City~~) of  
Clay for the purpose of receipt, processing, and coordination of all inquiries  
and requirements necessary to obtain available State and Federal assistance.

DATE: 6/6/2022 Rumelt  
Mayor (Board President)

ATTEST: [Signature] Board Member  
[Signature] Board Member  
[Signature] Board Member  
[Signature] Board Member  
Clerk of the Board of  
Supervisors (or ~~City~~),  
County of: Clay  
State of Mississippi

**PROCLAMATION OF EXISTENCE OF A LOCAL EMERGENCY**  
(by City Council or County Board of Supervisors)

**WHEREAS,** Clay County the ~~City Council~~ /or Board of Supervisors does hereby find that conditions of extreme peril to the safety of persons and property have arisen within said City /County, caused by

COVID-19

(Severe storm, tornado, damaging winds, flash flooding, river flooding

drought, wildland fire, structural fire, hail, hazardous material incident, epidemic, hurricane, earthquake, other)

commencing on or about 8 AM/PM on the 1<sup>st</sup> day of Jan, 2020; and

**WHEREAS,** the aforesaid conditions of extreme peril warrant and necessitate the proclamation of the existence of a local emergency in order to provide for the health and safety of the citizens and the protection of their property within the affected jurisdiction;

**NOW, THEREFORE, IT IS HEREBY PROCLAIMED** that in accordance with Section 33-15-17(d), Mississippi Code of 1972, as amended, a local emergency now exists throughout said ~~City~~ /County; and shall be reviewed every thirty (30) days until such local emergency is no longer in effect and proclaimed terminated by the ~~City Council~~ / Board of Supervisors of the ~~City~~ / County of Clay, State of Mississippi.

**IT IS FURTHER PROCLAIMED AND ORDERED** that all ~~City~~ / County agencies and departments shall render all possible assistance and discharge their emergency responsibilities as set forth in the ~~City~~ / County Emergency Operations Plan.

**DATE:**

6/6/2022

[Signature]  
Mayor / President of Board of Supervisors

**ATTEST:**

[Signature]  
Clerk of ~~City~~ / Chancery  
Clerk for Board of Supervisors

[Signature]  
Councilperson / Supervisor

[Signature]  
Councilperson / Supervisor

[Signature]  
Councilperson / Supervisor

[Signature]  
Councilperson / Supervisor

Clay  
City / or County, State of MS

RESOLUTION REQUESTING GOVERNOR TO PROCLAIM

A STATE OF EMERGENCY

WHEREAS, on Jan 10<sup>th</sup>, 2020, the Board of Supervisors (~~City Council~~) of the County of Clay found that due to the impact (or imminent threat) of Flooding / Wind a condition of extreme peril (earthquake, flood, hazmat, hurricane, severe storm, other) to life and property did exist in Clay County; and

WHEREAS, on June 6th, 2022, in accordance with State Law 33-15-17(d) the Board of Supervisors declared that an emergency does exist throughout said county; and

WHEREAS, it has now been found that local resources are unable to cope with the effects of said emergency;

NOW, THEREFORE, IT IS HEREBY DECLARED AND ORDERED that a copy of this declaration be forwarded to the Governor of Mississippi with the request that he proclaim the County (~~City~~) of Clay to be in a State of Emergency; and

IT IS FURTHER RESOLVED that Torrey J Williams, EMA Director (Person) (Title) is thereby designated as the authorized representative of the County (~~City~~) of Clay for the purpose of receipt, processing, and coordination of all inquiries and requirements necessary to obtain available State and Federal assistance.

DATE: 6/6/2022

ATTEST:

[Signature]  
Clerk of the Board of  
Supervisors (or ~~City~~),  
County of:  
Clay  
State of Mississippi

[Signature]  
Mayor (Board President)

[Signature]  
Board Member

[Signature]  
Board Member

[Signature]  
Board Member

[Signature]  
Board Member



**PROCLAMATION OF EXISTENCE OF A LOCAL EMERGENCY**  
(by City Council or County Board of Supervisors)

**WHEREAS,** Clay County the ~~City Council~~ /or Board of Supervisors does hereby find that conditions of extreme peril to the safety of persons and property have arisen within said City /County, caused by Flooding / Wind

(Severe storm, tornado, damaging winds, flash flooding, river flooding

drought, wildland fire, structural fire, hail, hazardous material incident, epidemic, hurricane, earthquake, other)

commencing on or about 8 AM /PM on the 10<sup>th</sup> day of Jan, 20 20; and

**WHEREAS,** the aforesaid conditions of extreme peril warrant and necessitate the proclamation of the existence of a local emergency in order to provide for the health and safety of the citizens and the protection of their property within the affected jurisdiction;

**NOW, THEREFORE, IT IS HEREBY PROCLAIMED** that in accordance with Section 33-15-17(d), Mississippi Code of 1972, as amended, a local emergency now exists throughout said ~~City~~ /County; and shall be reviewed every thirty (30) days until such local emergency is no longer in effect and proclaimed terminated by the ~~City Council~~ / Board of Supervisors of the ~~City~~ / County of Clay, State of Mississippi.

**IT IS FURTHER PROCLAIMED AND ORDERED** that all ~~City~~ / County agencies and departments shall render all possible assistance and discharge their emergency responsibilities as set forth in the ~~City~~ / County Emergency Operations Plan.

**DATE:** 6/6/2022

[Signature]  
Mayor / President of Board of Supervisors

**ATTEST:** [Signature]  
Clerk of City / Chancery  
Clerk for Board of Supervisors

[Signature]  
Councilperson / Supervisor

[Signature]  
Councilperson / Supervisor

[Signature]  
Councilperson / Supervisor

[Signature]  
Councilperson / Supervisor

Clay  
City / or County, State of MS

# RESOLUTION REQUESTING GOVERNOR TO PROCLAIM

## A STATE OF EMERGENCY

WHEREAS, on Feb 10th, 2020, the Board of Supervisors (~~City Council~~) of the County of Clay found that due to the impact (or imminent threat) of Flooding / winds a condition of extreme peril (earthquake, flood, hazmat, hurricane, severe storm, other) to life and property did exist in Clay County; and

WHEREAS, on June 6th, 2022, in accordance with State Law 33-15-17(d) the Board of Supervisors declared that an emergency does exist throughout said county; and

WHEREAS, it has now been found that local resources are unable to cope with the effects of said emergency;

NOW, THEREFORE, IT IS HEREBY DECLARED AND ORDERED that a copy of this declaration be forwarded to the Governor of Mississippi with the request that he proclaim the County (~~City~~) of Clay to be in a State of Emergency; and

IT IS FURTHER RESOLVED that Torrey J Williams, EMA Director (Person) (Title) is thereby designated as the authorized representative of the County (~~City~~) of Clay for the purpose of receipt, processing, and coordination of all inquiries

and requirements necessary to obtain available State and Federal assistance.

DATE: 6/6/2022 [Signature]  
Mayor (Board President)

ATTEST: [Signature] Board Member  
[Signature] Board Member  
Clerk of the Board of Supervisors (or ~~City~~),  
County of: Clay Board Member  
State of Mississippi [Signature] Board Member

PROCLAMATION OF EXISTENCE OF A LOCAL EMERGENCY  
(by City Council or County Board of Supervisors)

WHEREAS, Clay County the ~~City Council~~ /or Board of Supervisors does hereby find that conditions of extreme peril to the safety of persons and property have arisen within said City /County, caused by Flooding / Winds

(Severe storm, tornado, damaging winds, flash flooding, river flooding

drought, wildland fire, structural fire, hail, hazardous material incident, epidemic, hurricane, earthquake, other)

commencing on or about 8 ☒ AM / PM on the 10<sup>th</sup> day of Feb, 20 20; and

WHEREAS, the aforesaid conditions of extreme peril warrant and necessitate the proclamation of the existence of a local emergency in order to provide for the health and safety of the citizens and the protection of their property within the affected jurisdiction;

NOW, THEREFORE, IT IS HEREBY PROCLAIMED that in accordance with Section 33-15-17(d), Mississippi Code of 1972, as amended, a local emergency now exists throughout said ~~City~~ /County; and shall be reviewed every thirty (30) days until such local emergency is no longer in effect and proclaimed terminated by the ~~City Council~~ / Board of Supervisors of the ~~City~~ / County of Clay, State of Mississippi.

IT IS FURTHER PROCLAIMED AND ORDERED that all ~~City~~ / County agencies and departments shall render all possible assistance and discharge their emergency responsibilities as set forth in the ~~City~~ / County Emergency Operations Plan.

DATE: 6/6/2022

[Signature]  
Mayor / President of Board of Supervisors

ATTEST: [Signature]

Clerk of ~~City~~ / Chancery  
Clerk for Board of Supervisors

[Signature]  
Councilperson / Supervisor

[Signature]  
Councilperson / Supervisor

[Signature]  
Councilperson / Supervisor

[Signature]  
Councilperson / Supervisor

Clay  
~~City~~ / or County, State of MS

## RESOLUTION REQUESTING GOVERNOR TO PROCLAIM

## A STATE OF EMERGENCY

WHEREAS, on April 12<sup>th</sup>, 2020, the Board of Supervisors (~~City Council~~)  
of the County of Clay found that due to the impact (or imminent threat)  
of Flooding/Winds a condition of extreme peril  
(earthquake, flood, hazmat, hurricane, severe storm, other)  
to life and property did exist in Clay County; and

WHEREAS, on June 6th, 2022, in accordance with State Law 33-15-17(d) the  
Board of Supervisors declared that an emergency does exist throughout said county; and

WHEREAS, it has now been found that local resources are unable to cope with the  
effects of said emergency;

NOW, THEREFORE, IT IS HEREBY DECLARED AND ORDERED that a copy of  
this declaration be forwarded to the Governor of Mississippi with the request that he proclaim  
the County (~~City~~) of Clay to be in a State of Emergency; and

IT IS FURTHER RESOLVED that Torrey J Williams, EMA Director  
(Person) (Title)  
is thereby designated as the authorized representative of the County (~~City~~) of  
Clay for the purpose of receipt, processing, and coordination of all inquiries

and requirements necessary to obtain available State and Federal assistance.

DATE: 6/6/2022

ATTEST:

[Signature]  
Clerk of the Board of  
Supervisors (or ~~City~~),  
County of Clay  
State of Mississippi

[Signature]  
Mayor (Board President)

[Signature]  
Board Member

[Signature]  
Board Member

[Signature]  
Board Member

[Signature]  
Board Member

**PROCLAMATION OF EXISTENCE OF A LOCAL EMERGENCY**  
(by City Council or County Board of Supervisors)

**WHEREAS,** Clay County the ~~City Council~~ /or Board of Supervisors does hereby find that conditions of extreme peril to the safety of persons and property have arisen within said City /County, caused by Flooding / winds

(Severe storm, tornado, damaging winds, flash flooding, river flooding

drought, wildland fire, structural fire, hail, hazardous material incident, epidemic, hurricane, earthquake, other)

commencing on or about 8 AM/PM on the 12<sup>th</sup> day of April, 20 20; and

**WHEREAS,** the aforesaid conditions of extreme peril warrant and necessitate the proclamation of the existence of a local emergency in order to provide for the health and safety of the citizens and the protection of their property within the affected jurisdiction;

**NOW, THEREFORE, IT IS HEREBY PROCLAIMED** that in accordance with Section 33-15-17(d), Mississippi Code of 1972, as amended, a local emergency now exists throughout said ~~City~~ /County; and shall be reviewed every thirty (30) days until such local emergency is no longer in effect and proclaimed terminated by the ~~City Council~~ / Board of Supervisors of the ~~City~~ / County of Clay, State of Mississippi.

**IT IS FURTHER PROCLAIMED AND ORDERED** that all ~~City~~ / County agencies and departments shall render all possible assistance and discharge their emergency responsibilities as set forth in the ~~City~~ / County Emergency Operations Plan.

**DATE:** 6/6/2022

[Signature]  
Mayor / President of Board of Supervisors

**ATTEST:**

[Signature]  
Clerk of ~~City~~ / Chancery  
Clerk for Board of Supervisors

[Signature]  
Councilperson / Supervisor

[Signature]  
Councilperson / Supervisor

[Signature]  
Councilperson / Supervisor

Clay  
~~City~~ / or County, State of MS

[Signature]  
Councilperson / Supervisor

Tornado

RESOLUTION REQUESTING GOVERNOR TO PROCLAIM

A STATE OF EMERGENCY

WHEREAS, on March 22, 2022, the Board of Supervisors (~~City Council~~)  
of the County of Clay found that due to the impact (or imminent threat)  
of Tornado, Wind a condition of extreme peril  
(earthquake, flood, hazmat, hurricane, severe storm, other)  
to life and property did exist in Clay County; and

WHEREAS, on June 6th, 2022, in accordance with State Law 33-15-17(d) the  
Board of Supervisors declared that an emergency does exist throughout said county; and

WHEREAS, it has now been found that local resources are unable to cope with the  
effects of said emergency;

NOW, THEREFORE, IT IS HEREBY DECLARED AND ORDERED that a copy of  
this declaration be forwarded to the Governor of Mississippi with the request that he proclaim  
the County (~~City~~) of Clay to be in a State of Emergency; and

IT IS FURTHER RESOLVED that Torrey J Williams, EMA Director  
(Person) (Title)  
is thereby designated as the authorized representative of the County (~~City~~) of  
Clay for the purpose of receipt, processing, and coordination of all inquiries  
and requirements necessary to obtain available State and Federal assistance.

DATE: 6/6/2022

ATTEST.

[Signature]  
Clerk of the Board of  
Supervisors (or ~~City~~),  
County of:  
Clay  
State of Mississippi

[Signature]  
Mayor (Board President)

[Signature]  
Board Member

[Signature]  
Board Member

[Signature]  
Board Member

[Signature]  
Board Member

MEMA DR-4 (Rev. 12/01)

Tornado

**PROCLAMATION OF EXISTENCE OF A LOCAL EMERGENCY**  
(by City Council or County Board of Supervisors)

**WHEREAS,** Clay County the ~~City Council~~ /or Board of Supervisors does hereby find that conditions of extreme peril to the safety of persons and property have arisen within said City /County, caused by Tornado, Wind

(Severe storm, tornado, damaging winds, flash flooding, river flooding

drought, wildland fire, structural fire, hail, hazardous material incident, epidemic, hurricane, earthquake, other)

commencing on or about 8 AM/PM on the 22<sup>nd</sup> day of March, 2022; and

**WHEREAS,** the aforesaid conditions of extreme peril warrant and necessitate the proclamation of the existence of a local emergency in order to provide for the health and safety of the citizens and the protection of their property within the affected jurisdiction;

**NOW, THEREFORE, IT IS HEREBY PROCLAIMED** that in accordance with Section 33-15-17(d), Mississippi Code of 1972, as amended, a local emergency now exists throughout said ~~City~~ /County; and shall be reviewed every thirty (30) days until such local emergency is no longer in effect and proclaimed terminated by the ~~City Council~~ / Board of Supervisors of the ~~City~~ / County of Clay, State of Mississippi.

**IT IS FURTHER PROCLAIMED AND ORDERED** that all ~~City~~ / County agencies and departments shall render all possible assistance and discharge their emergency responsibilities as set forth in the ~~City~~ / County Emergency Operations Plan.

DATE: 6/6/2022

[Signature]  
Mayor / President of Board of Supervisors

ATTEST: [Signature]  
Clerk of ~~City~~ / Chancery  
Clerk for Board of Supervisors

[Signature]  
Councilperson / Supervisor

[Signature]  
Councilperson / Supervisor

[Signature]  
Councilperson / Supervisor

Clay  
~~City~~ / or County, State of MS

[Signature]  
Councilperson / Supervisor

# EXHIBIT K



HOME (HTTPS://WWW.SHERIFFS.ORG/) ABOUT (HTTPS://WWW.SHERIFFS.ORG/ABOUT-NSA)

SEARCH

Search

LEADERSHIP (HTTPS://WWW.SHERIFFS.ORG/ABOUT-NSA/LEADERSHIP)

PARTNERSHIPS (HTTPS://WWW.SHERIFFS.ORG/PARTNERS)

CALENDAR (HTTPS://WWW.SHERIFFS.ORG/CALENDAR-OF-EVENTS)

CONFERENCES (HTTPS://WWW.SHERIFFS.ORG/CONFERENCES)

STORE (HTTPS://NSA.SHERIFFS.ORG/S/STORE) CONTACT US (/CONTACT-US)

HOME (/) / 2022 ANNUAL CONFERENCE [KANSAS CITY]

# 2022 ANNUAL CONFERENCE [KANSAS CITY]

June 27, 2022 to June 30, 2022

[Learn More](#)

[\(https://www.nsaconference.org/\)](https://www.nsaconference.org/)



[\(https://www.nsaconference.org/\)](https://www.nsaconference.org/)



## TRAINING & EVENTS

**OCT 10** | **TRAINING**  
Court & Judicial Security  
Training

[\(/events/Court-Judicial-Security-  
Training-0\)](/events/Court-Judicial-Security-Training-0)

**NOV 11** | **TRAINING**  
Court & Judicial Security  
Training

[\(/events/Court-Judicial-Security-Training\)](/events/Court-Judicial-Security-Training)

Submit your seminar proposal (due March 10, 2022) [here](https://sheriffs.org/annualseminars) (<https://sheriffs.org/annualseminars>).

Register for the 2022 Annual Conference [here](https://nsaannual.voicehive.com/) (<https://nsaannual.voicehive.com/>).

FEB  
03

EVENT

2023 Winter Conference

[\(/events/2023-Winter-Conference\)](/events/2023-Winter-Conference)

KEY OFFERINGS

- PRESS CENTER  
(/CONTACT-US/PRESS-CENTER)

CAREER CENTER  
(HTTP://NSACAREERS.SHERIFFS.ORG/)

ULTIMATE GUIDE  
(HTTP://ULTIMATEGUIDEFORSHERIFF)
- AMERICA'S SHERIFFS  
(/NSA-MEMBERSHIP/MEMBER-DIRECTORY)

STAY CONNECTED

- 

(HTTPS://WWW.FACEBOOK.COM/NATIONALSHERIFFSASSOCIATION/)
- 

(HTTPS://TWITTER.COM/NATIONALSHERIFF)
- 

(HTTPS://WWW.LINKEDIN.COM/COMPANY/SHERIFFS/)



([HTTPS://WWW.INSTAGRAM.COM/NATIONALSHERIFFS/](https://www.instagram.com/nationalsheriffs/))



([HTTPS://WWW.YOUTUBE.COM/C/SHERIFFSG1940](https://www.youtube.com/c/sheriffsg1940))

[MEMBERSHIP \(/MEMBERSHIP\)](#) | [CONTACT \(/CONTACT-US\)](#) | [PRIVACY POLICY \(/PRIVACY-POLICY\)](#) |

[TERMS OF USE \(/TERMS-OF-USE\)](#) |

[STATE NONPROFIT DISCLOSURES \(HTTPS://WWW.SHERIFFS.ORG/STATE-NONPROFIT-DISCLOSURES\)](https://www.sheriffs.org/state-nonprofit-disclosures) |

[NSA STORE \(HTTPS://NSA.SHERIFFS.ORG/S/STORE\)](https://nsa.sheriffs.org/s/store)

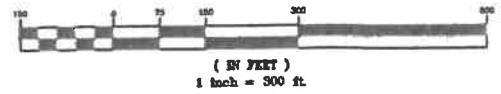
**NATIONAL SHERIFFS' ASSOCIATION**

© 2021 National Sheriffs' Association. All Rights Reserved

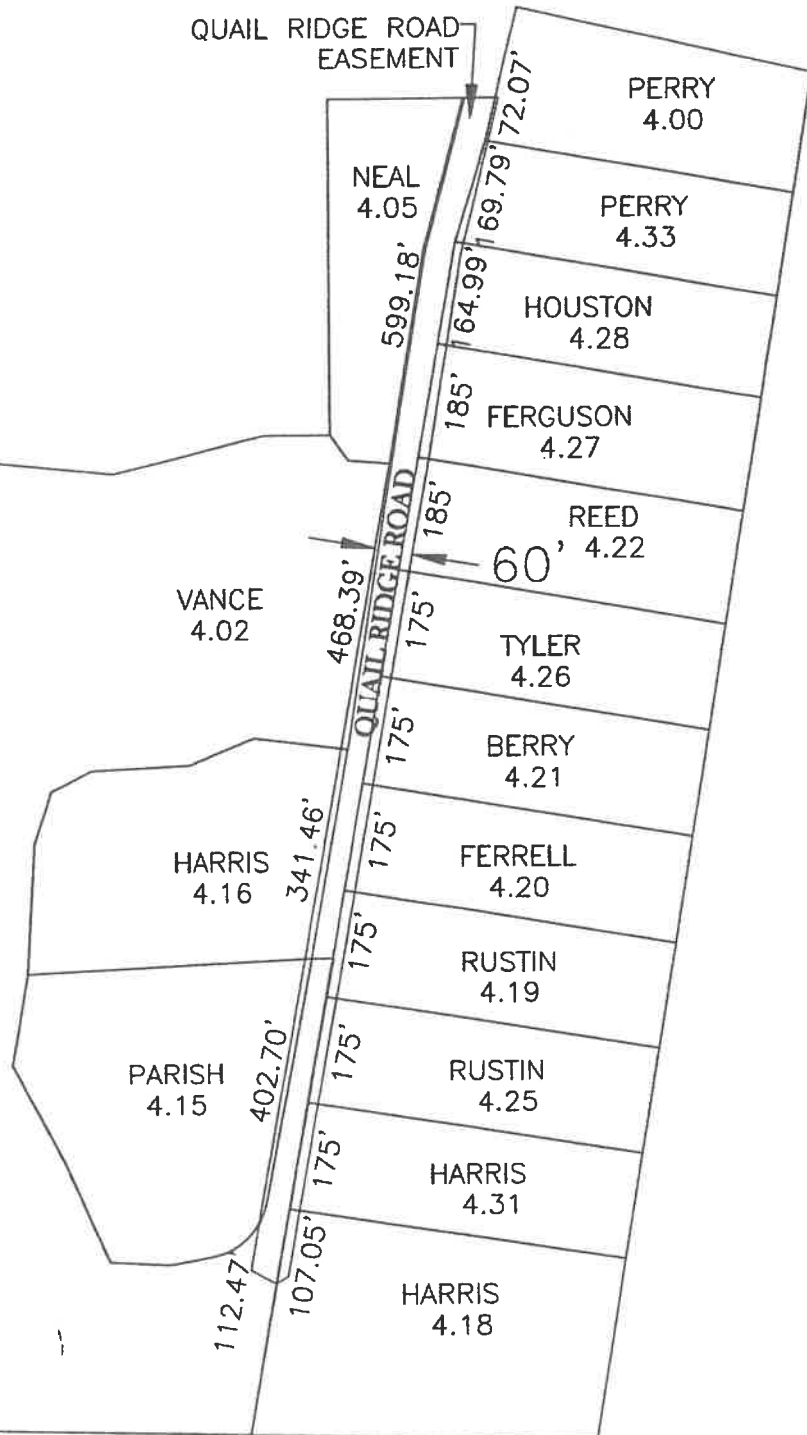


# EXHIBIT L

GRAPHIC SCALE



QUAIL RIDGE ROAD  
EASEMENT



# QUAIL RIDGE ROAD FRONT FOOTAGE

5-30-22 221154

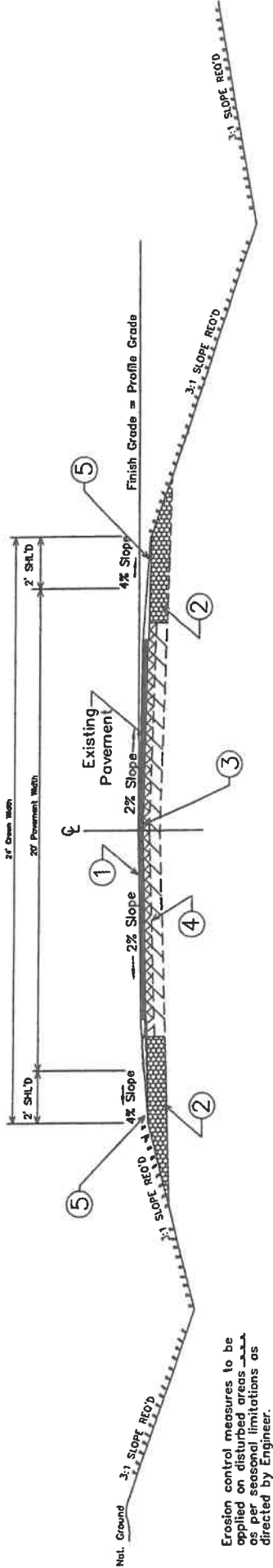
RATES OF APPLICATION FOR ESTIMATING QUANTITIES

| ITEM                                  | RATE               |
|---------------------------------------|--------------------|
| Hot Mix Asphalt (ST)(9.5mm)           | 110 Lb./S.Y./In.   |
| Fine Aggregate (LVM)                  | 0.0375 C.Y./S.Y.   |
| Portland Cement (Roadbed Reclamation) | 5% By Weight       |
| Granular Mat'l.                       | 6.58 C.Y./Sta(LVM) |
| Agricultural Limestone                | 1.0 Ton/Acre       |
| Ammonium Nitrate *                    | 0.50 Ton/Acre      |
| Commercial Fertilizer (13-13-13)      | 0.75 Ton/Acre      |
| Vegetative Mat'l. For Mulch           | 2.0 Ton/Acre       |

\* NOTE:  
The Ammonium Nitrate is to be Applied After  
Grass Growth is Established.

QUAIL RIDGE ROAD  
CLAY COUNTY

- 1 2" Hot Mix Asphalt ST 9.5 mm  
Req'd. (One Lin)(20' Wide) BY OTHERS
- 2 6" Crushed Stone Req'd to widen  
roadbed and restore crown.
- 3 Immediately following application of prime seal coat,  
a 1" thick layer of fine sand shall be placed onto  
the primed surface. After a minimum of 3 day cure  
time and immediately prior to paving, the fine sand  
shall be swept from the surface and used as shoulder  
material. Payment to be under Pay Item S-310-C-1.
- 4 Roadbed Reclamation As Designated Shall Require Pulverizing  
And Cement-Water Mixing The Full Pavement Width Plus 1'  
Outside Of Lane Edge Each Side. Portland Cement (5% By Weight)  
Shall Be Incorporated Into The Top 8" Of Existing Base Material.  
See Roadbed Reclamation General Note This Sheet.
- 5 Shoulder Material, Granular Material,  
(Cl. 3, Gp. B) Req'd.



TYPICAL ROADBED RECLAMATION AND SURFACING SECTION

QUAIL RIDGE ROAD

ROADBED RECLAMATION

GENERAL NOTES

1. Concealed hot mix asphalt deposits encountered  
in pulverizing and mixing of existing base material  
shall be pulverized as a part of roadbed reclamation  
operation. No separate pay item.
2. Bituminous curing seal (0.25 Gal/SY) required.  
Water and bituminous material for curing seal  
will not be measured for payment.
3. Existing roadway asphalt to be pulverized and additional  
crushed stone added to the roadway to restore the cross  
slope geometry. Payment for pulverization to be included in  
Pay Item S-632-A. Payment for crushed stone shall be by  
the ton..

GENERAL NOTES

1. Contractor shall maintain positive drainage  
at all times.
2. Saw cutting of existing pavement required  
for smooth construction joint shall be  
absorbed in cost of other bid items
3. Removal and reinstallation of county road  
signs and mail boxes shall be absorbed in  
cost of other bid items.
4. Tack coat required before placing hot mix  
asphalt on existing pavement (0.1 Gal./S.Y.)  
No Pay Item. Cost to be included in other  
Pay Items.

TYPICAL SECTION SHEET  
QUAIL RIDGE RD. CLAY COUNTY, MS

**CLAY COUNTY BOARD OF SUPERVISORS  
QUAIL RIDGE ROAD (1,900 LF)(NO PAVEMENT)  
PRELIMINARY COST ESTIMATE  
CSE#221154  
27-May-21**

|                                | Item Description        | Unit     | Quantity | Unit Cost   | Total Cost           |
|--------------------------------|-------------------------|----------|----------|-------------|----------------------|
| 1                              | Mobilization            | Lump Sum | Lump Sum | \$20,000.00 | \$ 20,000.00         |
| 2                              | Clearing & Grubbing     | Lump Sum | Lump Sum | \$15,000.00 | \$ 15,000.00         |
| 3                              | Unclassified Excavation | C.Y.     | 3,800    | \$10.00     | \$ 38,000.00         |
| 4                              | Crushed Stone           | Tons     | 500      | \$60.00     | \$ 30,000.00         |
| 7                              | Roadbed Reclamation     | S.Y.     | 4,500    | \$12.00     | \$ 54,000.00         |
| 8                              | Blotter Material        | C.Y.     | 170      | \$50.00     | \$ 8,500.00          |
| 9                              | 15" Polyethylene Pipe   | L.F.     | 120      | \$40.00     | \$ 4,800.00          |
| 10                             | 24" Polyethylene Pipe   | L.F.     | 60       | \$65.00     | \$ 3,900.00          |
| 11                             | Concrete Driveway       | S.Y.     | 20       | \$200.00    | \$ 4,000.00          |
| 12                             | Maintenance of Traffic  | Lump Sum | Lump Sum | \$3,500.00  | \$3,500.00           |
| 13                             | Erosion Control         | Lump Sum | Lump Sum | \$10,000.00 | \$10,000.00          |
|                                |                         |          |          |             |                      |
| <b>TOTAL CONSTRUCTION COST</b> |                         |          |          |             | <b>\$ 191,700.00</b> |
| <b>ENGINEERING</b>             |                         |          |          |             | <b>\$ 25,000.00</b>  |
| <b>TESTING</b>                 |                         |          |          |             | <b>\$ 3,500.00</b>   |
| <b>CONTINGENCIES</b>           |                         |          |          |             | <b>\$ 19,800.00</b>  |
| <b>TOTAL PROJECT COST</b>      |                         |          |          |             | <b>\$ 240,000.00</b> |

QUAIL RIDGE ROAD - FRONT FOOTAGE COST

|                  |          |              |                 |
|------------------|----------|--------------|-----------------|
| QUAIL RIDGE ROAD |          | 221154       |                 |
| WEST SIDE        |          | EAST SIDE    |                 |
| FOOTAGE          |          | FOOTAGE      |                 |
| 248.80           |          | 260.60 FT    |                 |
| 350.40           |          | 347.90 FT    |                 |
| 1,325.00         |          | 1,325.40 FT  |                 |
|                  |          | COST         |                 |
|                  |          | ESTIMATE     |                 |
|                  |          | \$240,000.00 |                 |
| TOTAL            | 1,924.20 | 1,933.90 FT  | \$62.21 COST/FT |
| BOTH SIDES       |          | 3,858.10 FT  |                 |

| WEST SIDE |          |          |         | COST         | EAST SIDE |          |          |         | COST         |
|-----------|----------|----------|---------|--------------|-----------|----------|----------|---------|--------------|
|           | PARCEL # | FOOTAGE  | PERCENT | ESTIMATE     |           | PARCEL # | FOOTAGE  | PERCENT | ESTIMATE     |
| PARISH    | 4.15     | 402.70   | 10.44%  | \$25,050.67  | HARRIS    | 4.18     | 107.05   | 2.77%   | \$6,659.24   |
| HARRIS    | 4.16     | 341.46   | 8.85%   | \$21,241.13  | HARRIS    | 4.31     | 175.00   | 4.54%   | \$10,886.19  |
| VANCE     | 4.02     | 468.39   | 12.14%  | \$29,137.04  | RUSTIN    | 4.25     | 175.00   | 4.54%   | \$10,886.19  |
| VANCE     | 4.02     | 112.47   | 2.92%   | \$6,996.40   | RUSTIN    | 4.19     | 175.00   | 4.54%   | \$10,886.19  |
| NEAL      | 4.05     | 599.18   | 15.53%  | \$37,273.06  | FERRELL   | 4.20     | 175.00   | 4.54%   | \$10,886.19  |
|           |          |          |         |              | BERRY     | 4.21     | 175.00   | 4.54%   | \$10,886.19  |
|           |          |          |         |              | TYLER     | 4.26     | 175.00   | 4.54%   | \$10,886.19  |
|           |          |          |         |              | REED      | 4.22     | 185.00   | 4.80%   | \$11,508.26  |
|           |          |          |         |              | FERGUSON  | 4.27     | 185.00   | 4.80%   | \$11,508.26  |
|           |          |          |         |              | HOUSTON   | 4.28     | 164.99   | 4.28%   | \$10,263.50  |
|           |          |          |         |              | PETTY     | 4.33     | 169.79   | 4.40%   | \$10,562.09  |
|           |          |          |         |              | PETTY     | 4.00     | 72.07    | 1.87%   | \$4,483.24   |
| TOTAL     |          | 1,924.20 | 49.87%  | \$119,698.30 |           |          | 1,933.90 | 50.13%  | \$120,301.70 |

|                    |          |         |              |
|--------------------|----------|---------|--------------|
| SUMMARY BOTH SIDES |          |         |              |
| FRONT              |          |         | COST         |
| FOOTAGE            |          |         | ESTIMATE     |
| TOTAL              | 3,858.10 | 100.00% | \$240,000.00 |

| OWNER       | TAX PARCEL | FRONT FOOTAGE FT | COST ESTIMATE \$62.21/FT |
|-------------|------------|------------------|--------------------------|
| 1 PARRISH   | 4.15       | 402.70           | \$25,050.67              |
| 2 HARRIS    | 4.16       | 341.46           | \$21,241.13              |
| 3 HARRIS    | 4.18       | 107.05           | \$6,659.24               |
| 4 HARRIS    | 4.31       | 175.00           | \$10,886.19              |
| 5 VANCE     | 4.02       | 580.86           | \$36,133.43              |
| 6 NEAL      | 4.05       | 599.18           | \$37,273.06              |
| 7 RUSTIN    | 4.25       | 175.00           | \$10,886.19              |
| 8 RUSTIN    | 4.19       | 175.00           | \$10,886.19              |
| 9 FERRELL   | 4.20       | 175.00           | \$10,886.19              |
| 10 BERRY    | 4.21       | 175.00           | \$10,886.19              |
| 11 TYLER    | 4.26       | 175.00           | \$10,886.19              |
| 12 REED     | 4.22       | 185.00           | \$11,508.26              |
| 13 FERGUSON | 4.27       | 185.00           | \$11,508.26              |
| 14 HOUSTON  | 4.28       | 164.99           | \$10,263.50              |
| 15 PETTY    | 4.33       | 169.79           | \$10,562.09              |
| 16 PETTY    | 4.00       | 72.07            | \$4,483.24               |
|             | TOTAL      | 3,858.10         | \$240,000.00             |